

**REVISED MAY 8 – COMPLETION EXPECTED MID-JUNE****Sandcastles Moving to Larger Sandbox**

At today's meeting, Council approved a development permit application to relocate the Quality Foods Sand Sculpting Competition and Exhibition hosted by the Parksville Beach Festival Society to a portion of the kite field within the Parksville Community Park. The permit approves the land alteration and construction necessary to facilitate a new formalized area for the event.

The relocation project which includes utilities, excavation and fill, is expected to complete in May. The City's 2025-2029 financial plan includes \$150,000 with the Parksville Beach Festival Society contributing \$50,000 towards relocation costs. The move will free up the small sand courts near the gathering plaza for alternate programming, open waterfront views, and result in less congestion in the new gathering space.

This popular Parksville event has outgrown the existing small sand site near the waterfront walkway. The new larger sandbox will be in the southern portion of the kite field, adjacent to the sand volleyball courts, large gravel lot and Sandcastle Drive. The site is 150 metres from the current competition area and 200 metres from two washroom buildings. The location allows easy access for visitors, competitors, volunteers, and event setup crews from the large gravel lot and access from Sandcastle Drive will enhance accessibility. The new rectangular site will facilitate better use of space for the sculptures and improve accessibility within the site. The new site could potentially accommodate more sculptures as applications to participate in the exhibition exceed the number the existing space can accommodate.

The Parksville Beach Festival Society and the sand sculpting exhibition hold significant importance to the community playing a crucial role in bringing the community together, supporting local non-profits and boosting the local economy. The sand sculpting competition has a rich history dating back to 1982 when the first BC Open was hosted. The event has grown significantly, welcoming international visitors to our region. The four-day competition is open to professional and master-level sculptors and the sculptures remain on display for five weeks. The 2025 competition runs July 10 to 13 and the exhibition July 14 to August 17, open daily from 9.30 am to 8.30 pm.

###

**For more information:**

Deb Tardiff, Manager of Communications

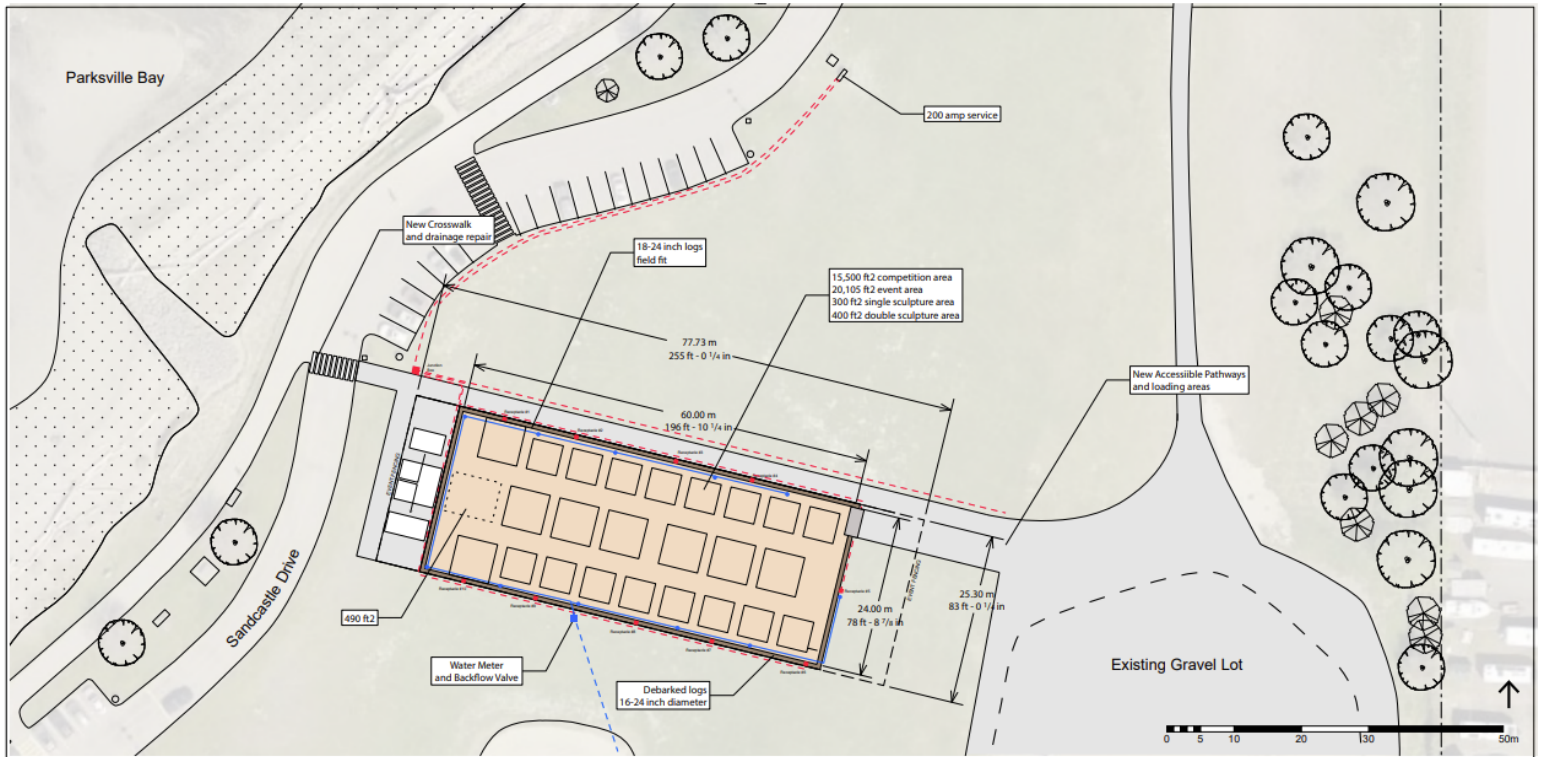
[communications@parksville.ca](mailto:communications@parksville.ca)

250 954-3073

*\*\* Map showing new location attached*

*The City of Parksville is located on the traditional territory of the Coast Salish Nations,  
home to the Snaw-Naw-As First Nation and the Qualicum First Nation.*

---



*The City of Parkville is located on the traditional territory of the Coast Salish Nations, home to the Snaw-Naw-As First Nation and the Qualicum First Nation.*

City of Parkville | 100 Jensen Avenue East (P O Box 1390), Parkville, BC V9P 2H3  
 Phone 250 248-6144 | [Parkville.ca](http://Parkville.ca)

