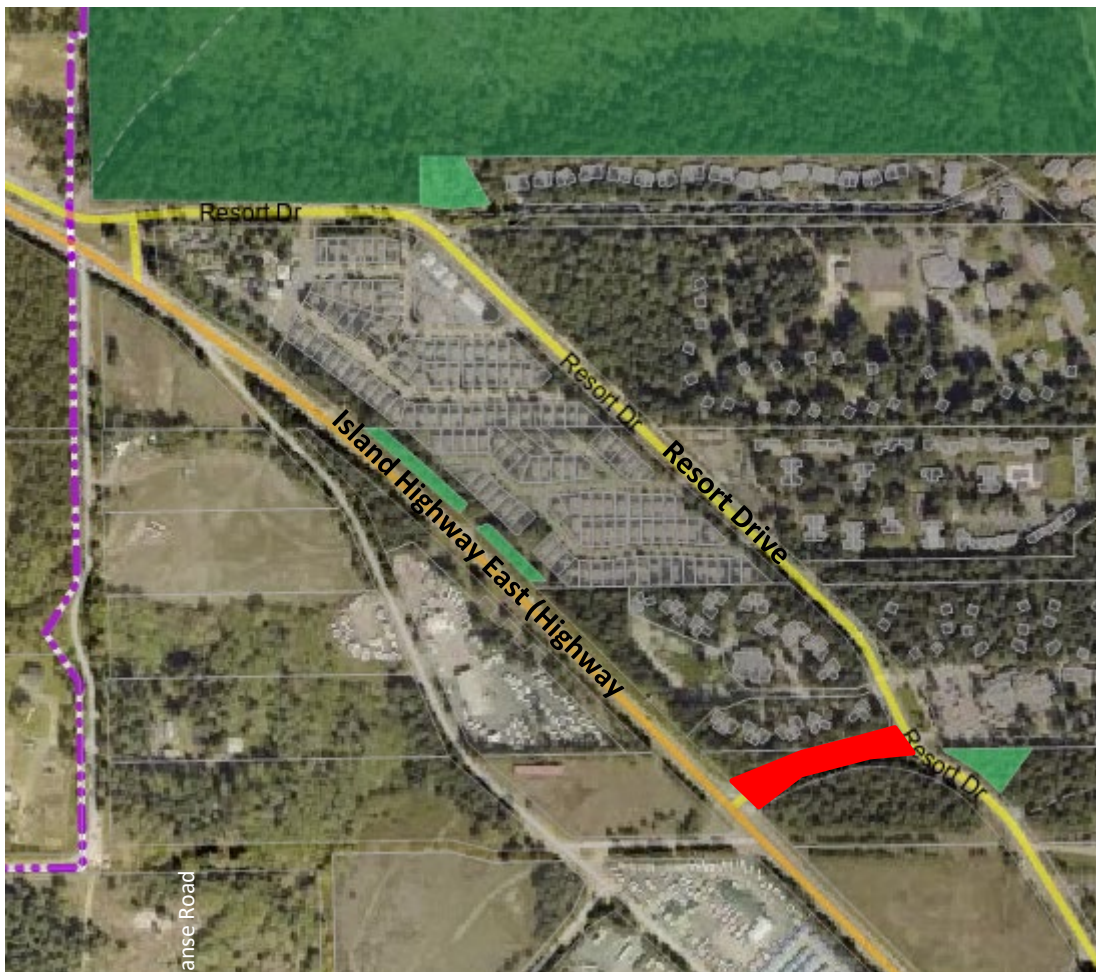


**Distribution:** RCMP, Ambulance, City of Parksville Fire Department, City of Parksville, Manager of Communications, Parksville Downtown Business Association, RDN Transit Services, Progressive Waste Solutions, Parksville/Qualicum Beach School District No. 69, Manager of Transportation

**Location:** Resort Way at Island Highway East (Highway 19A) intersection

**Dates:** May 26 to 29, 2024, 6 pm to 2 am (night work)

**Details:** Fortis BC gas main extension will require limited access to and from Resort Way onto the Island Highway East (Highway 19A). Access to Resort Drive will be directed through the west side of Resort Drive near the Rathtrevor Beach Provincial Park entrance. Traffic will be controlled in all directions for vehicles, cyclists and pedestrians.



**EMERGENCY VEHICLES WILL HAVE ACCESS THROUGH THIS WORK AREA,  
PLEASE CHOOSE AN ALTERNATE ROUTE AND AVOID THIS AREA, IF POSSIBLE.**