

## Cool Technology Used to Inventory City Trees

At the September 20 meeting, Warren Payne, parks supervisor, provided Council with information on *TreePlotter*, a web-based comprehensive GIS tree management software application for field data collection and data management. Operations staff use this information to plan their work, monitor and assess trees.

Trees are plotted on a map in the field or in the office with any web connection. Information collected for each tree includes common and Latin name, location, condition, size, required maintenance tasks, and an inspection cycle. The program can generate reports on trees and calculate ecosystem benefits provided by the trees such as estimate of air quality, carbon, and stormwater benefits.

Our operations department has inventoried almost 3,700 tree locations, mostly in parks and on boulevards; there are many boulevards and other public areas yet to be inventoried. Large tracts of urban forest areas such as Top Bridge Park or the Parksville Wetlands are also not yet inventoried.

In 2020, with an upgrade to the software, the program is now being used to inventory other park assets such as benches, garbage cans, memorial bench and tree program, and facility attributes. There are many opportunities to use *TreePlotter* as an asset management program and in fact, there are so many layers to *TreePlotter*, we are still learning what it can do.

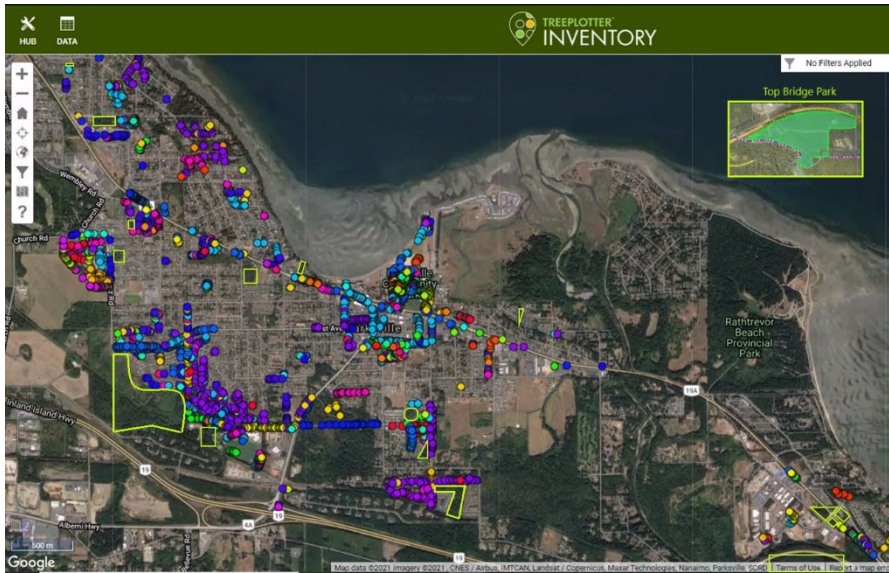
We recently announced consultant, Diamond Head, have undertaken an [urban forest strategy](#) for the City. Prior to starting the strategy to determine what our urban forest would be in the future; we knew it would be important to establish a baseline or status of the City's current urban forest. A significant part of establishing the baseline centered around establishing an inventory of City tree assets. We look forward to completing an inventory of all City trees and integrating that information into the urban forest strategy.

###

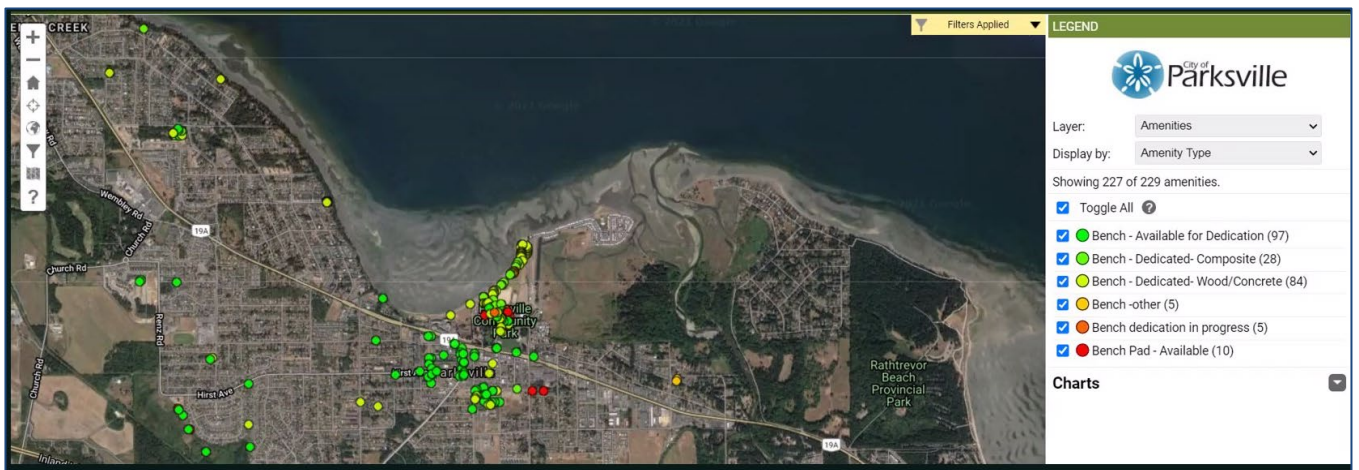
### For more information:

Deb Tardiff, Manager of Communications

[dtardiff@parksville.ca](mailto:dtardiff@parksville.ca); 250 954-3073



Map shows inventoried trees



Map shows City benches



Shows the total value of 3,643 trees