

CITY OF PARKSVILLE

BYLAW NO. 1475

A BYLAW TO EXCHANGE PARKLAND FOR OTHER LAND TO BE DEDICATED AS PARK

WHEREAS the City of Parksville received land dedicated as parkland as part of the subdivision for the Craig Bay development, an area dedicated as Park on Plan VIP 60816 (.924 hectares), as shown as "Closed Park" on the attached Schedule "A" to this Bylaw (although such lands will only be closed after final adoption of this Bylaw);

AND WHEREAS section 27 of the *Community Charter* authorizes a City to, by bylaw, dispose of land dedicated as park and exchange the land for other land suitable for a park or public square;

AND WHEREAS the City has identified land that is currently owned by the City of Parksville and held by Parksville and District Historical Society that would be suitable for park and wishes to dedicate that land in exchange for the Closed Park;

AND WHEREAS section 27 of the *Community Charter* requires the City to obtain elector approval in relation to the proposed Bylaw;

NOW THEREFORE BE IT RESOLVED THAT the Council of the City of Parksville in open meeting assembled enacts as follows:

1. This bylaw may be cited for all purposes as "Parkland Disposal and Exchange Bylaw No. 1475, 2011".
2. The Council of the City of Parksville is hereby authorized and empowered to:
 - a) dispose by way of lease of those lands identified as "Closed Park" on Schedule "A" attached hereto and forming part of this Bylaw, and
 - b) take and dedicate as park those lands identified as "Park" on Schedule "A" attached hereto and forming part of this Bylaw.
3. The Mayor and Corporate Officer of the City of Parksville are hereby authorized to execute all documents necessary to carry out the completion of the disposal and the dedication of land as park in exchange authorized by this Bylaw.

READ A FIRST TIME this ___ day of _____ 2011

READ A SECOND TIME this ___ day of _____ 2011

READ A THIRD TIME this ___ day of _____ 2011

RECEIVED THE ASSENT OF THE ELECTORS OF THE CITY OF PARKSVILLE this ____ day of _____ 2011

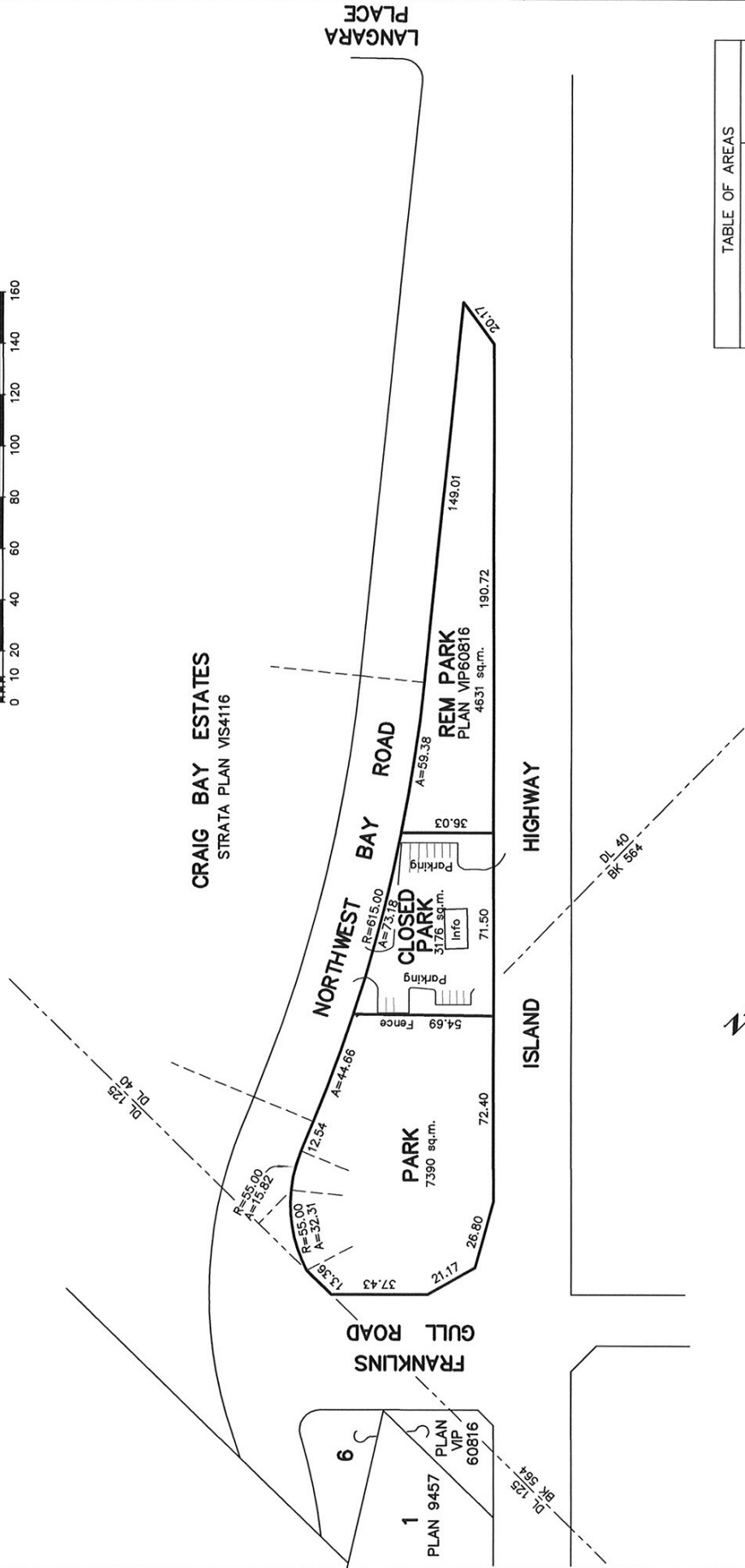
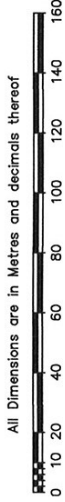
ADOPTED this ____ day of _____ 2011

Mayor

Corporate Officer

SCHEDULE "A"

SCHEDULE A
 PLAN TO ACCOMPANY CITY OF PARKSVILLE PARK LAND DISPOSAL AND EXCHANGE
 BYLAW 2011, NO. 1475, SHOWING PARK AND CLOSED PARK, DISTRICT LOT 40
 AND BLOCK 564, NANOOSE DISTRICT.



| TABLE OF AREAS | |
|------------------------|-------------|
| DESCRIPTION | AREA |
| REM PARK PLAN VIP60819 | 4631 sq.m. |
| PARK | 7390 sq.m. |
| TOTAL PARK | 12021 sq.m. |
| CLOSED PARK | 3176 sq.m. |



J.E. ANDERSON & ASSOCIATES
 B.C. Ltd. Surveyors & Structural Engineers
 # 203 Parksville, BC V8P 2G4
 250-248-5755 parks@jeanderson.com
 File : 60589-2