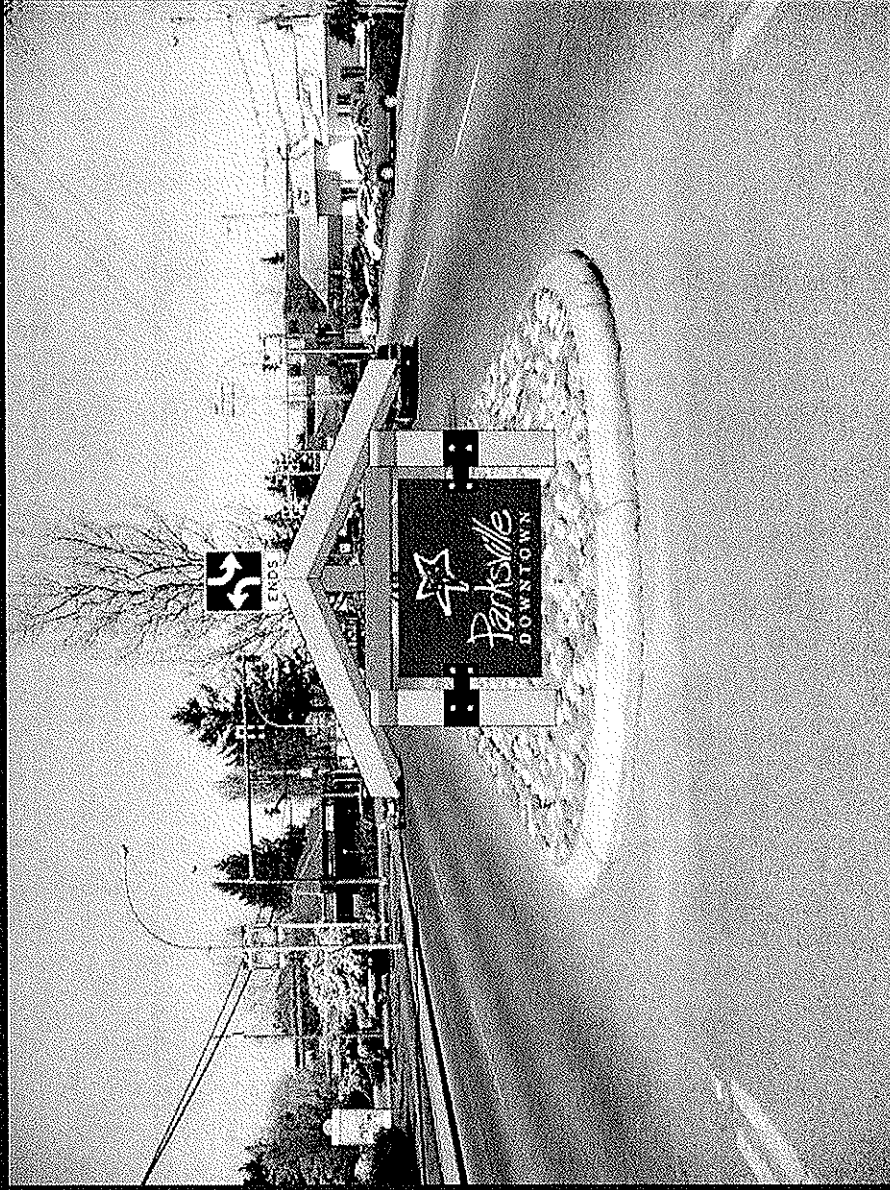
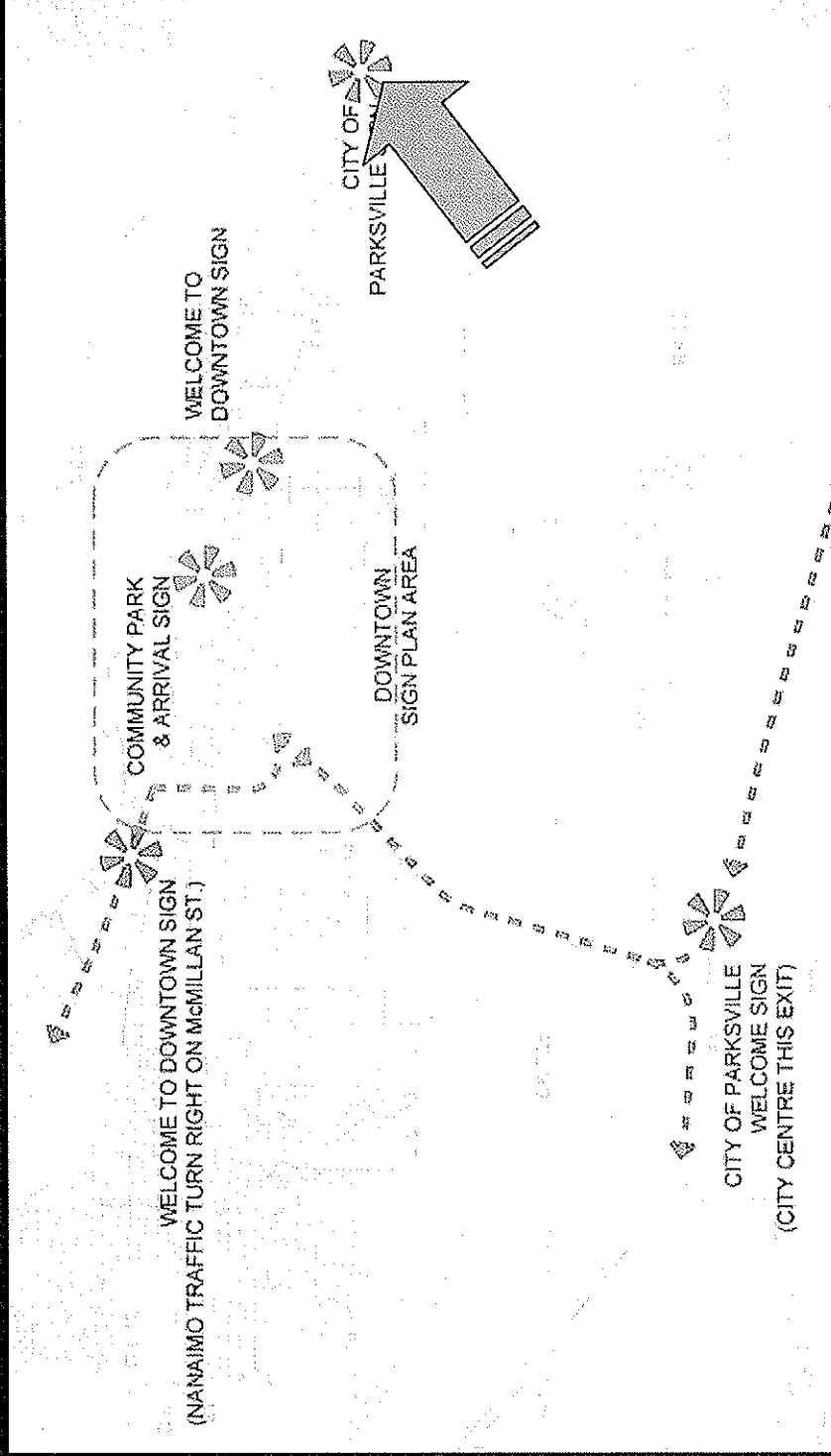


# Proposed Sign Concept: Island Highway 19a between Mills and McVickers

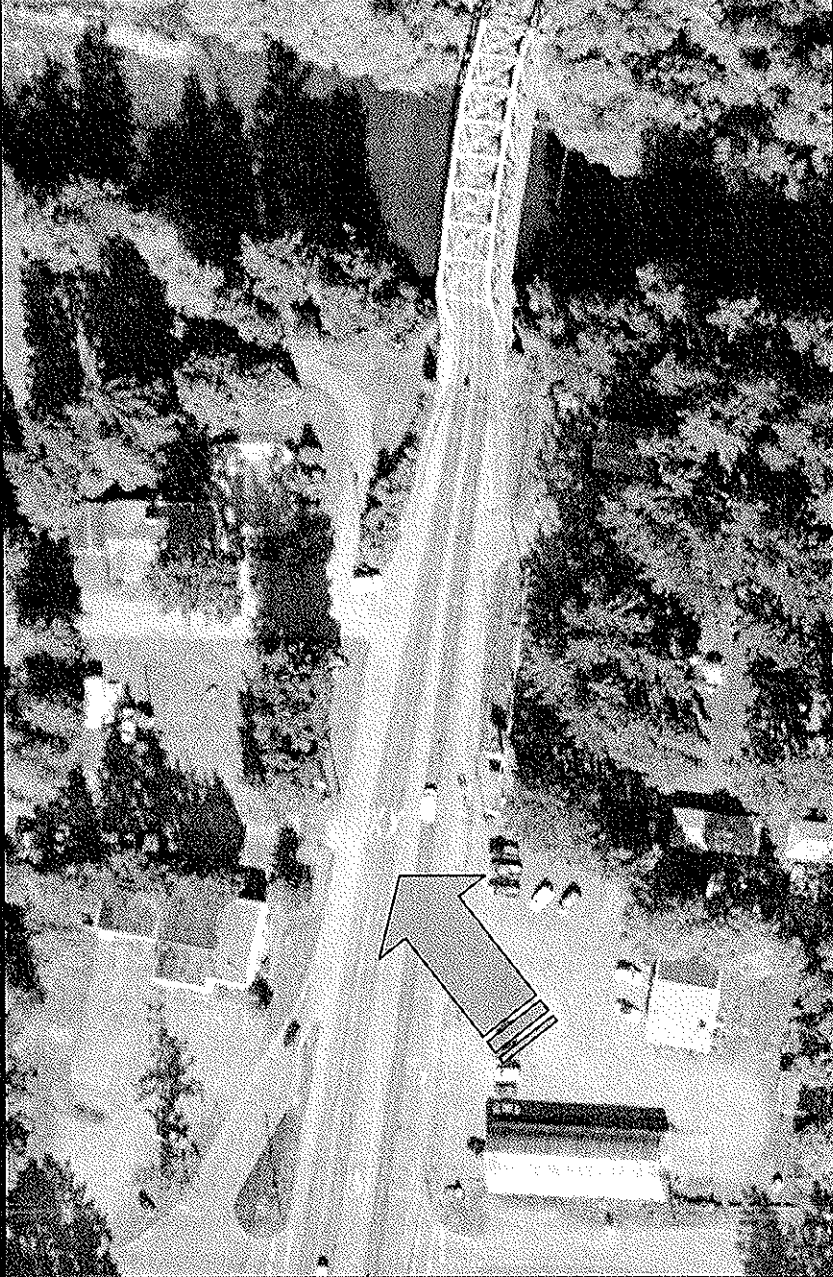


Sign Type #2

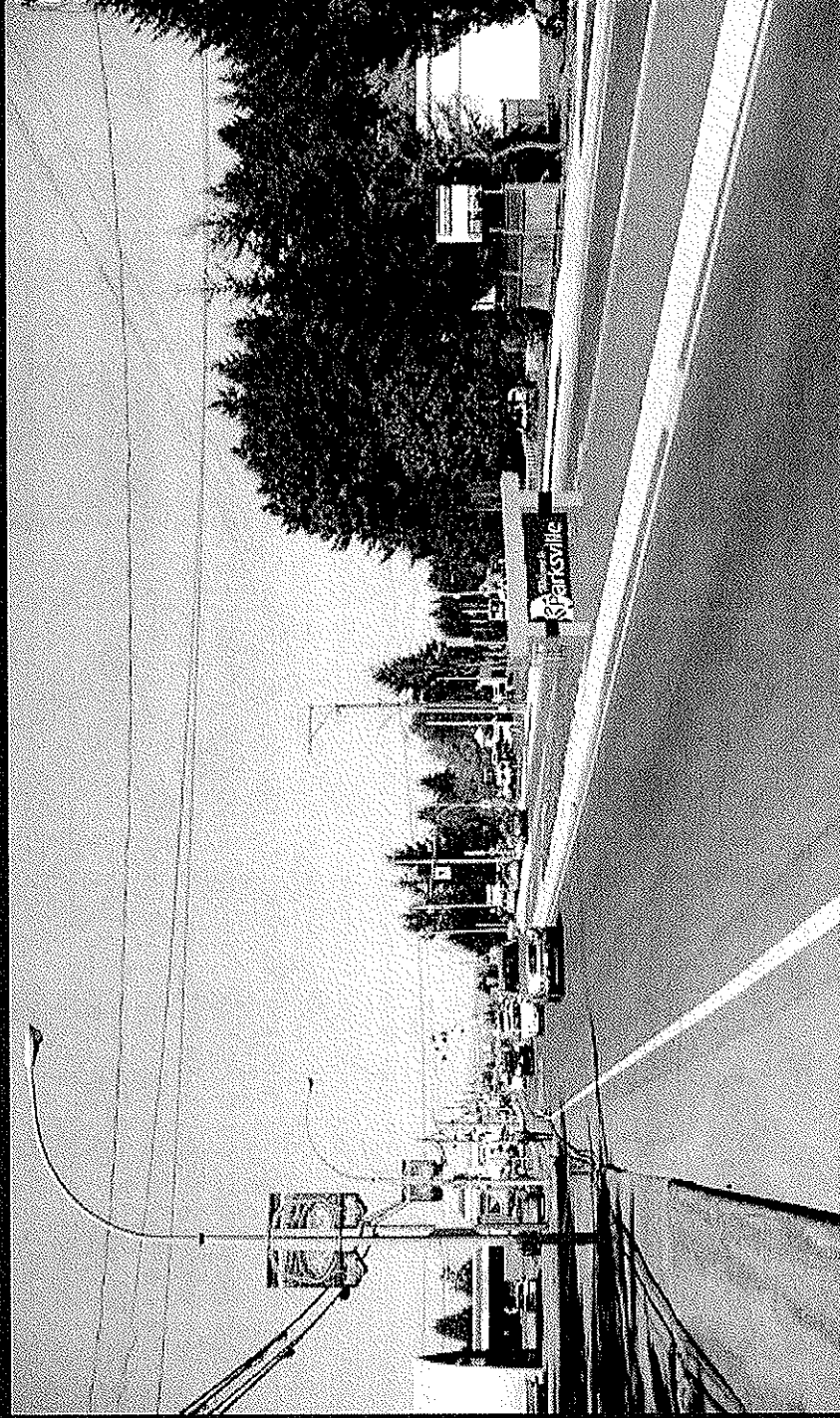
# Proposed Sign Location: Island Highway 19a at Martindale Road



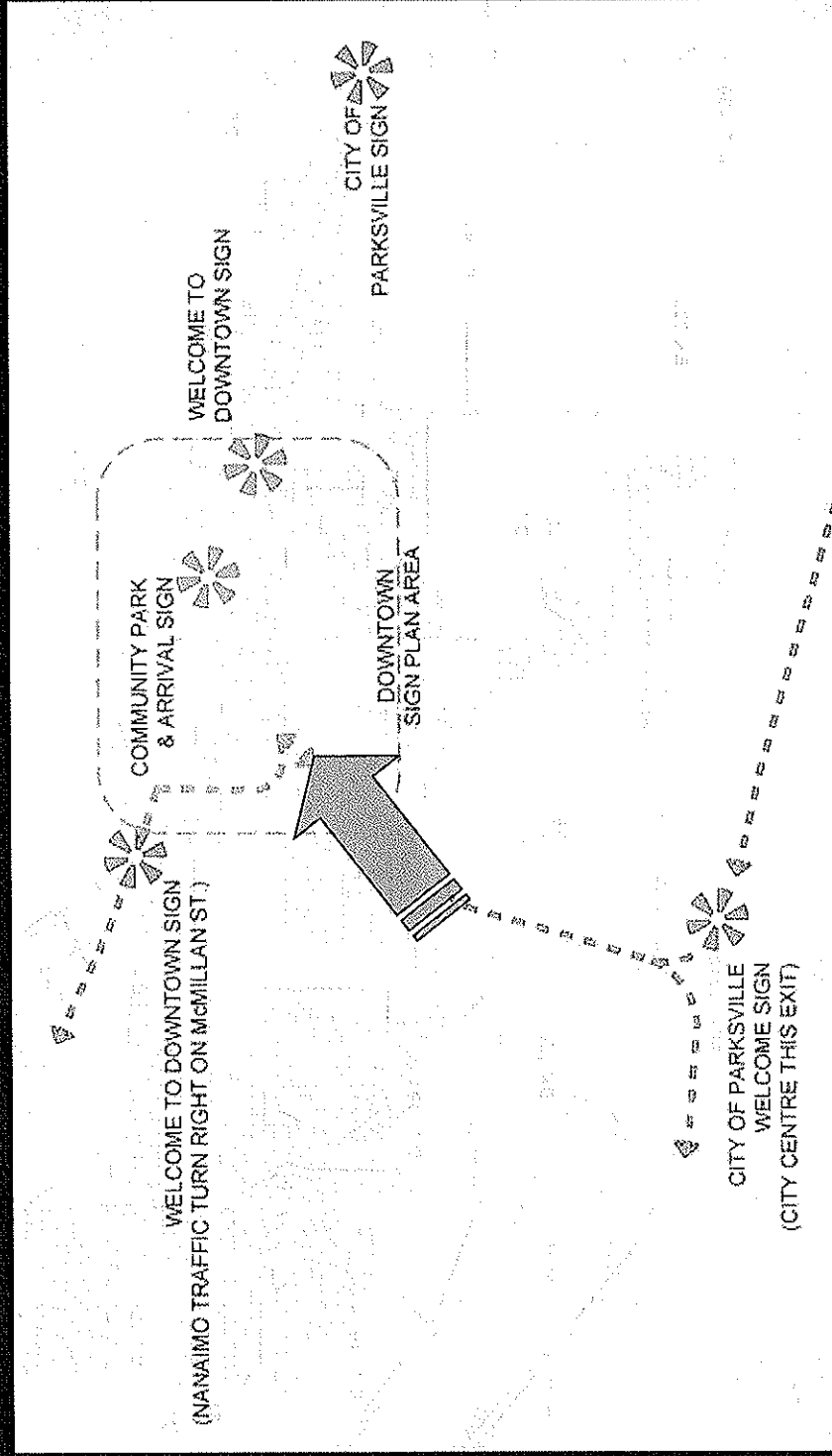
**Proposed Sign Location:  
Island Highway 19a at Martindale Road**



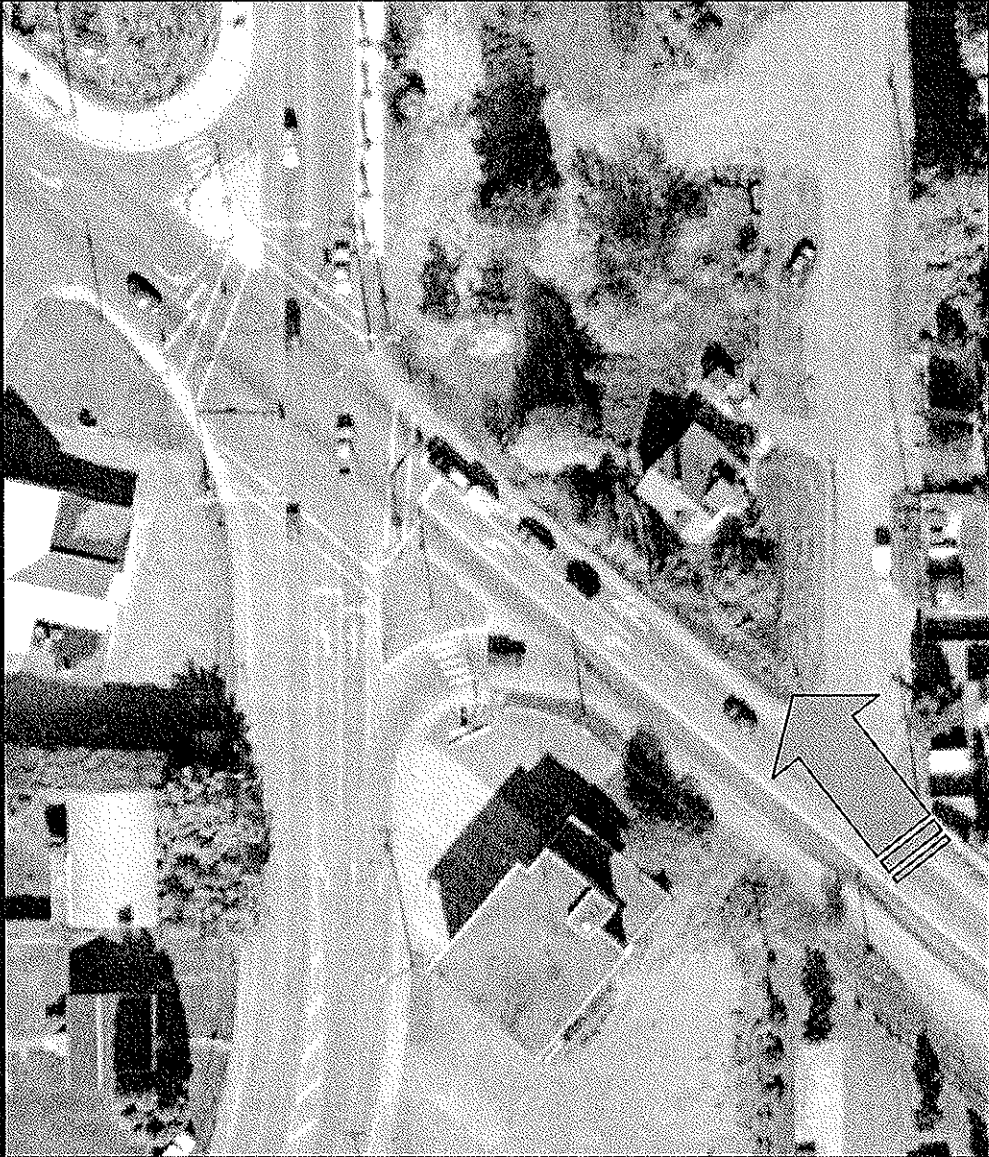
# Proposed Sign Concept: Island Highway 19a between Mills and McVickers



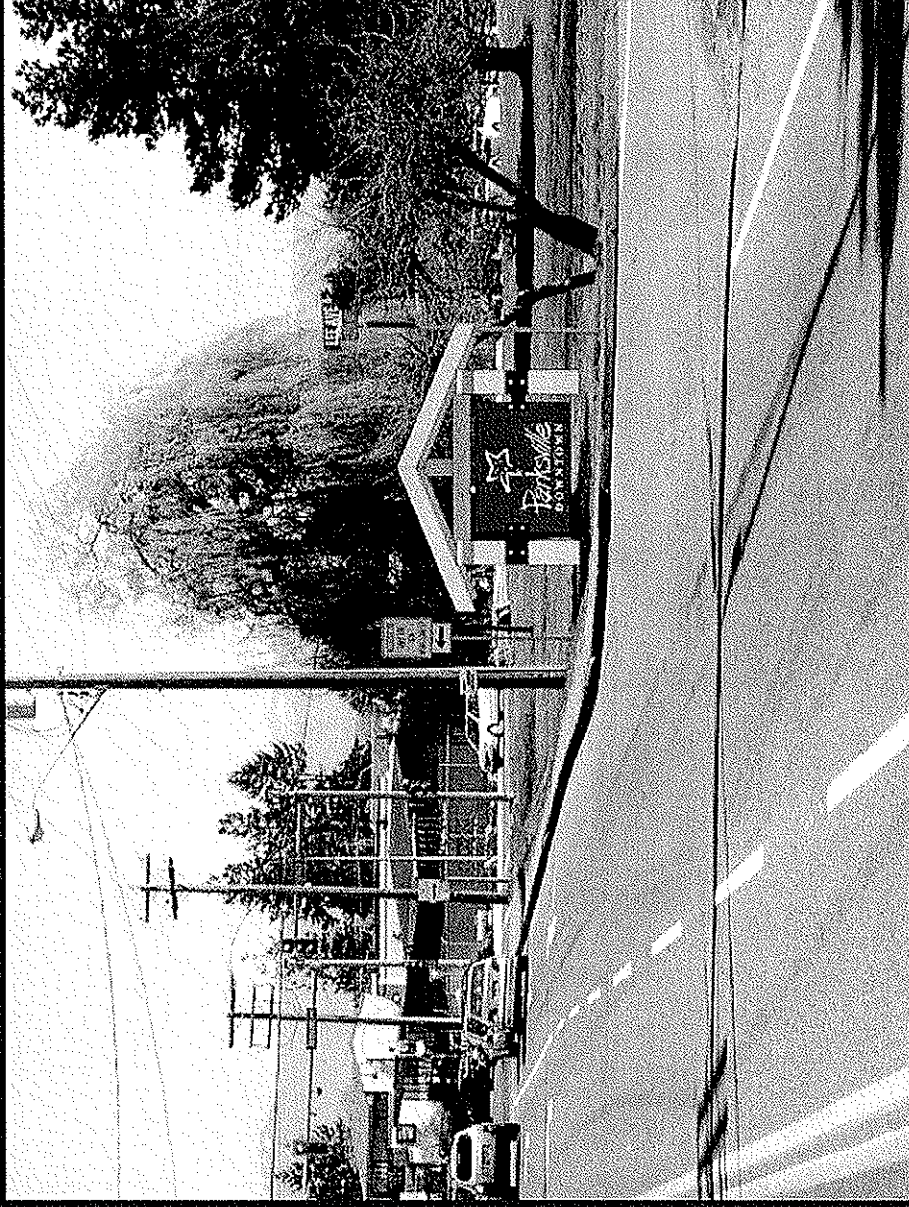
# Proposed Sign Location: Alberni Highway and Lee Avenue



# Proposed Sign Location: Alberni Highway and Lee Avenue



# Proposed Sign Concept: Alberni Highway and Lee Avenue



Sign Type #2

End.

