



Arrowsmith Dam and Englishman River Weekly Report

June 5 to June 14, 2026

Summary

Arrowsmith Dam

Reservoir level (June 14): 828.00 m (estimate)
 Estimated volume (June 14): 8,850,000.00 m³
 10-day average release rate: 0.38 m³/s
 10-day total released volume: 325,296.66 m³

Englishman River

10-day average baseflow estimate: 0.81 m³/s (flow at 08HB002 and the intake flow minus the dam release flow)
 10-day average flow at WSC hydrometric gauge 08HB002: 1.09 m³/s
 10-day average ERWS intake withdrawal flow: 0.10 m³/s
 10-day total ERWS intake volume: 80,920.00 m³

Other

Snow water equivalent at station 3B26P (June 14) : 0.00 mm
 Total 10-day rainfall at PWY: 14.00 mm
 Total 10-day rainfall at Community Park: 18.80 mm
 East Vancouver Island Drought Level: 3

Key Messages

- After a few days of rainfall and cooler weather, a high-pressure system brought above-average temperatures to the area over the weekend.
- The Arrowsmith Dam transducer is currently not functioning. As a result, the reservoir level and estimated storage volume were derived from dam outflow measurements and validated through a visual level reading taken on June 10. Rainfall during this period was also considered.

Weather Forecast (Qualicum Airport)



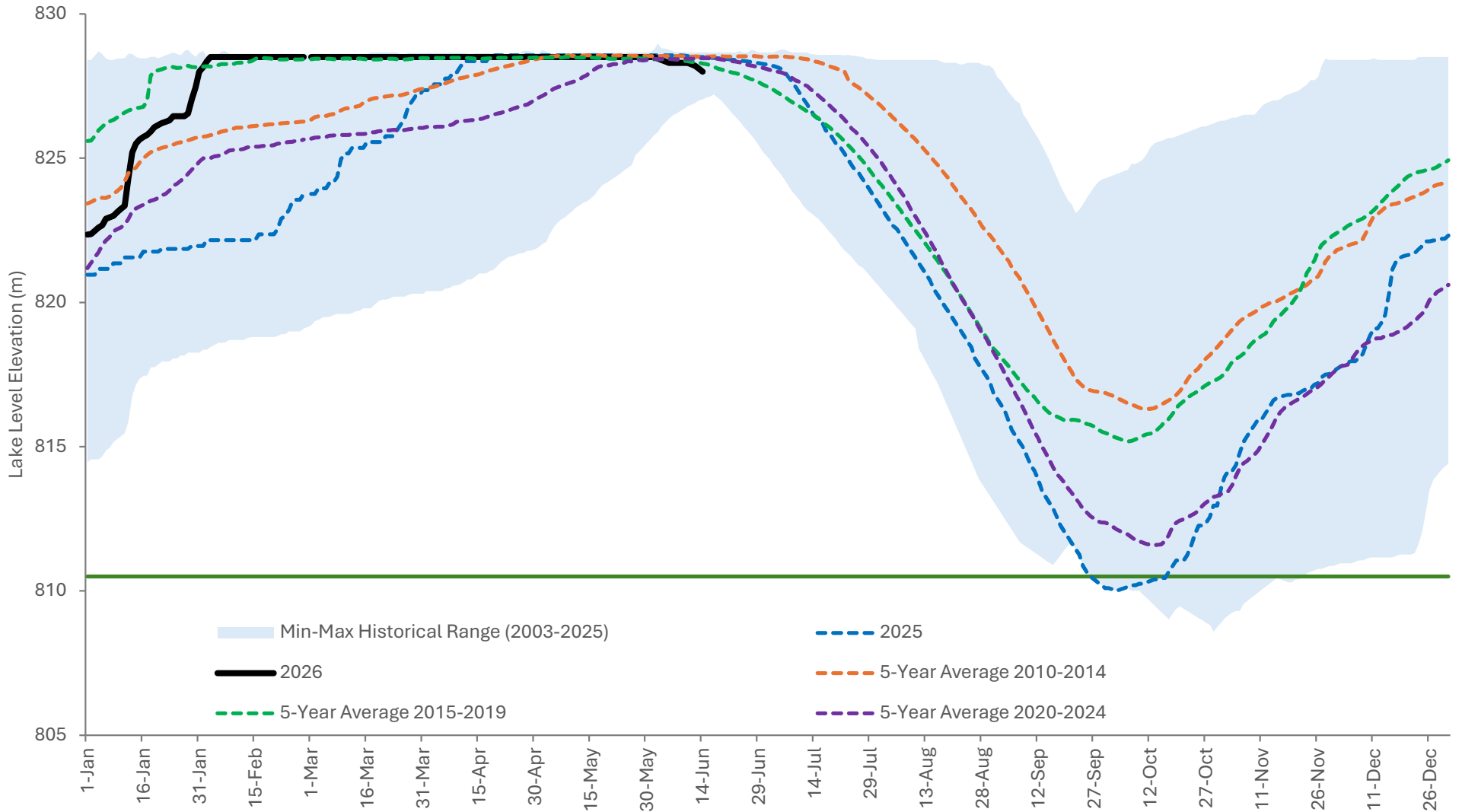
| Mon 15 Jun | Tue 16 Jun | Wed 17 Jun | Thu 18 Jun | Fri 19 Jun | Sat 20 Jun | Sun 21 Jun |
|---------------------------|--------------------------|-------------------|-------------------|-------------------|-------------------|-------------------|
| 27°C Mainly cloudy | 23°C Mainly sunny | 23°C Sunny | 26°C Sunny | 27°C Sunny | 23°C Sunny | 25°C Sunny |
| Tonight | Night | Night | Night | Night | Night | |
| 14°C Clearing | 13°C Clear | 13°C Clear | 13°C Clear | 13°C Clear | 13°C Clear | |



Arrowsmith Dam and Englishman River Weekly Report

June 5 to June 14, 2026

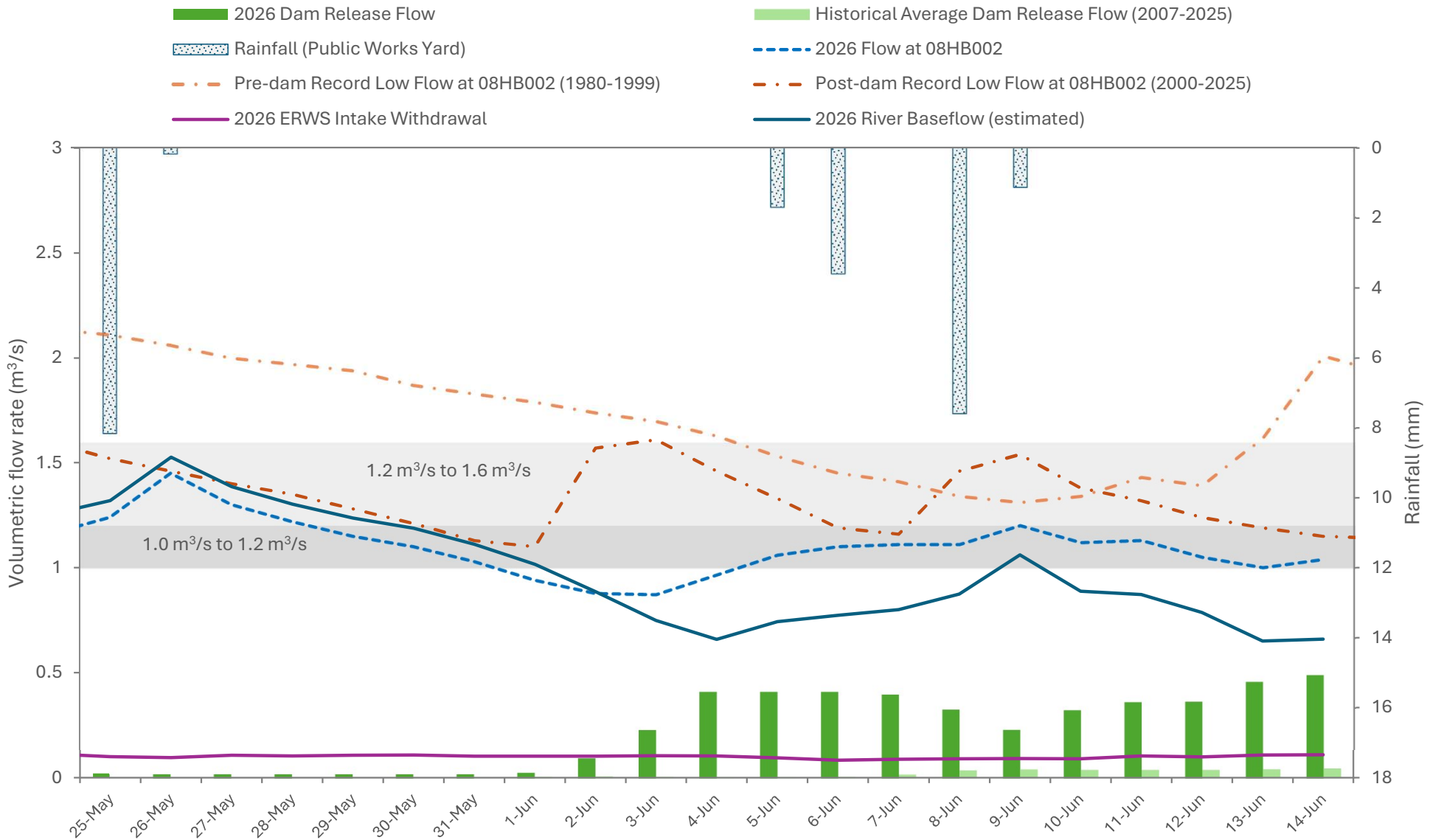
Arrowsmith Dam Reservoir Level



Arrowsmith Dam and Englishman River Weekly Report

June 5 to June 14, 2026

Volumetric Flow Rates and Rainfall

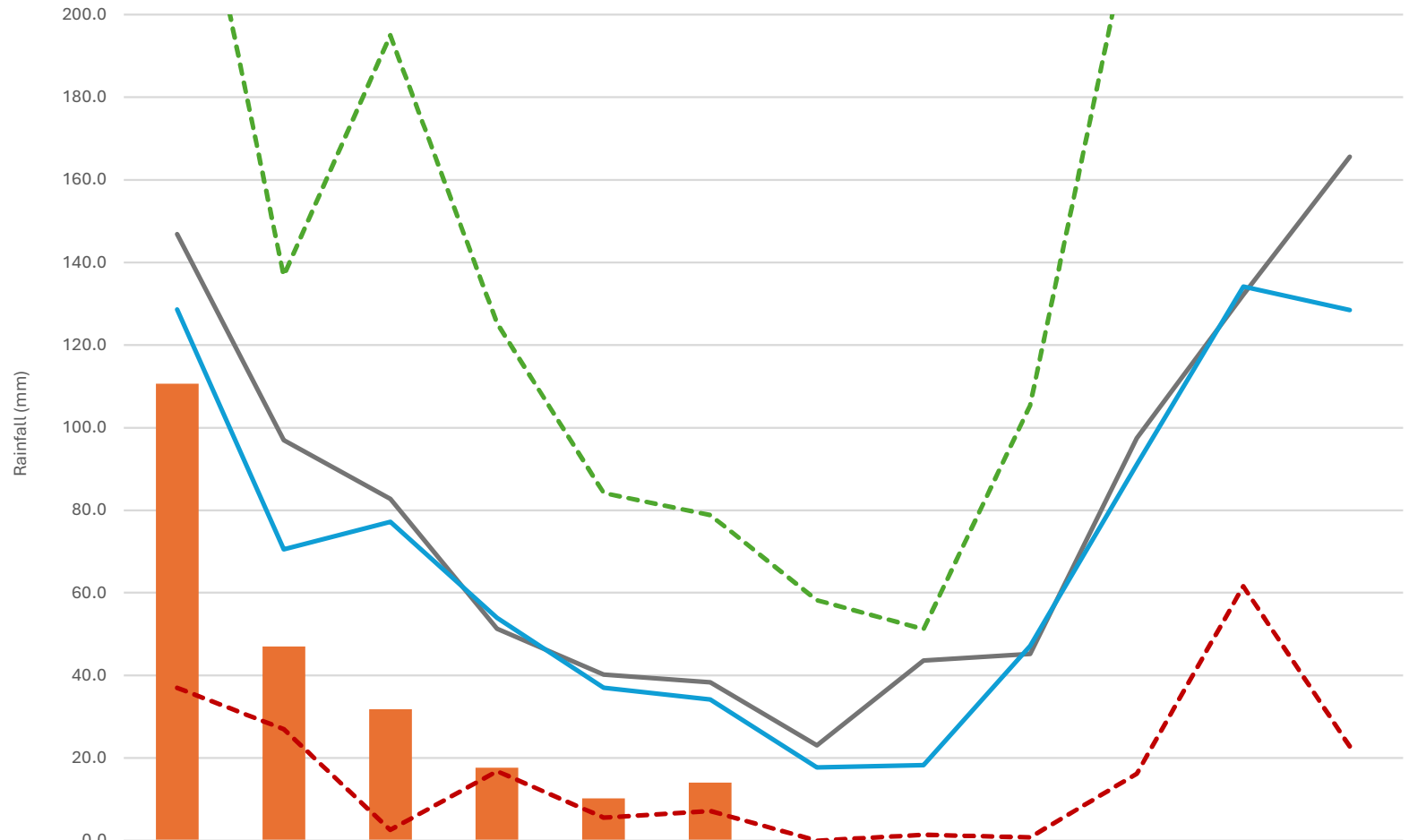




Arrowsmith Dam and Englishman River Weekly Report

June 5 to June 14, 2026

Rainfall at Public Works Yard



| | January | February | March | April | May | June | July | August | September | October | November | December |
|--|---------|----------|-------|-------|------|------|------|--------|-----------|---------|----------|----------|
| 2026 | 110.7 | 47.0 | 31.8 | 17.6 | 10.2 | 14.0 | | | | | | |
| Parksville AES Precipitation Normals (1951-1980) | 146.9 | 97.0 | 82.8 | 51.3 | 40.2 | 38.3 | 23.1 | 43.6 | 45.2 | 97.5 | 132.2 | 165.6 |
| Precipitation Average (2005-2025) | 128.6 | 70.5 | 77.2 | 53.9 | 37.0 | 34.2 | 17.8 | 18.3 | 47.2 | 91.1 | 134.1 | 128.5 |
| Precipitation Minimum(2005-2025) | 37.0 | 27.0 | 2.6 | 16.8 | 5.6 | 7.2 | 0.0 | 1.4 | 0.8 | 16.2 | 61.6 | 22.8 |
| Precipitation Maximum (2005-2025) | 262.0 | 136.8 | 195.0 | 125.2 | 84.2 | 78.8 | 58.2 | 51.2 | 105.4 | 228.0 | 265.0 | 218.3 |

*AES: Atmospheric Environment Service



Arrowsmith Dam and Englishman River Weekly Report

June 5 to June 14, 2026

Snow Water Equivalent – Station 3B26P

