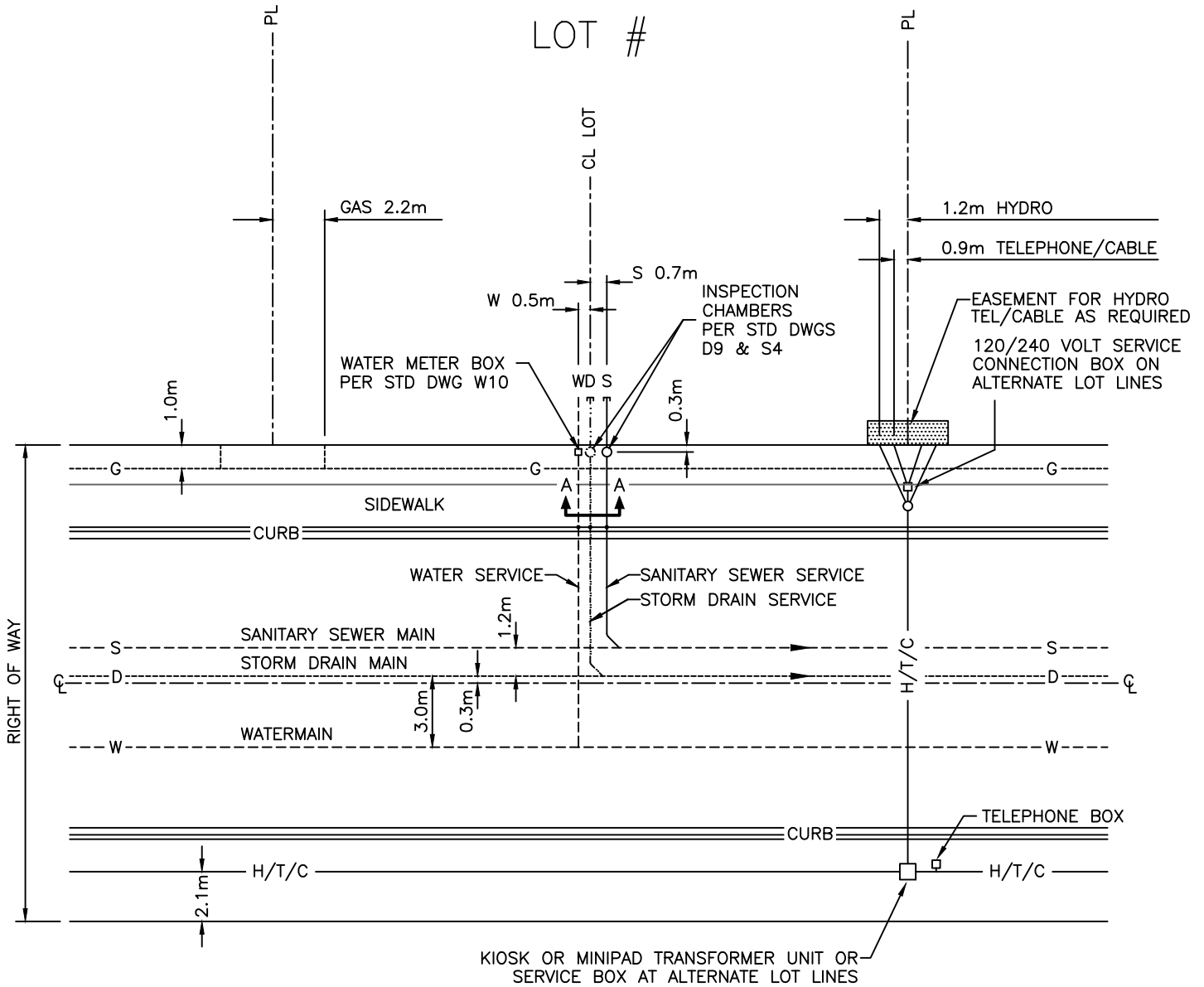


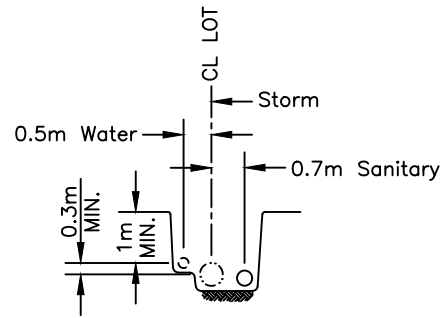
LOT #



KIOSK OR MINIPAD TRANSFORMER UNIT OR SERVICE BOX AT ALTERNATE LOT LINES

NOTE:

1. WHERE IT IS NECESSARY FOR CITY SERVICES TO BE LOCATED ON THE LOWER SIDE OF THE LOT (E.G. WHERE SIDE LOT GRADES ARE STEEP, SEWERS ARE SHALLOW, OR MBE'S ARE TOO HIGH, ETC.), NON-CITY SERVICES (H/T/C/G) MUST BE LOCATED ON THE OPPOSITE SIDE OF THE LOT. THIS MAY REQUIRE ADDITIONAL SERVICES BOXES.
2. WHERE SANITARY SEWERS AND STORM DRAINS ARE INSTALLED IN A COMMON TRENCH, THERE SHALL BE A MINIMUM 300 mm LATERAL CLEARANCE BETWEEN THE WALLS OF THE PIPES AND TRENCH WALLS.
3. MINIMUM 0.3m CLEARANCE FROM GAS MAIN TO STREETLIGHT DUCT

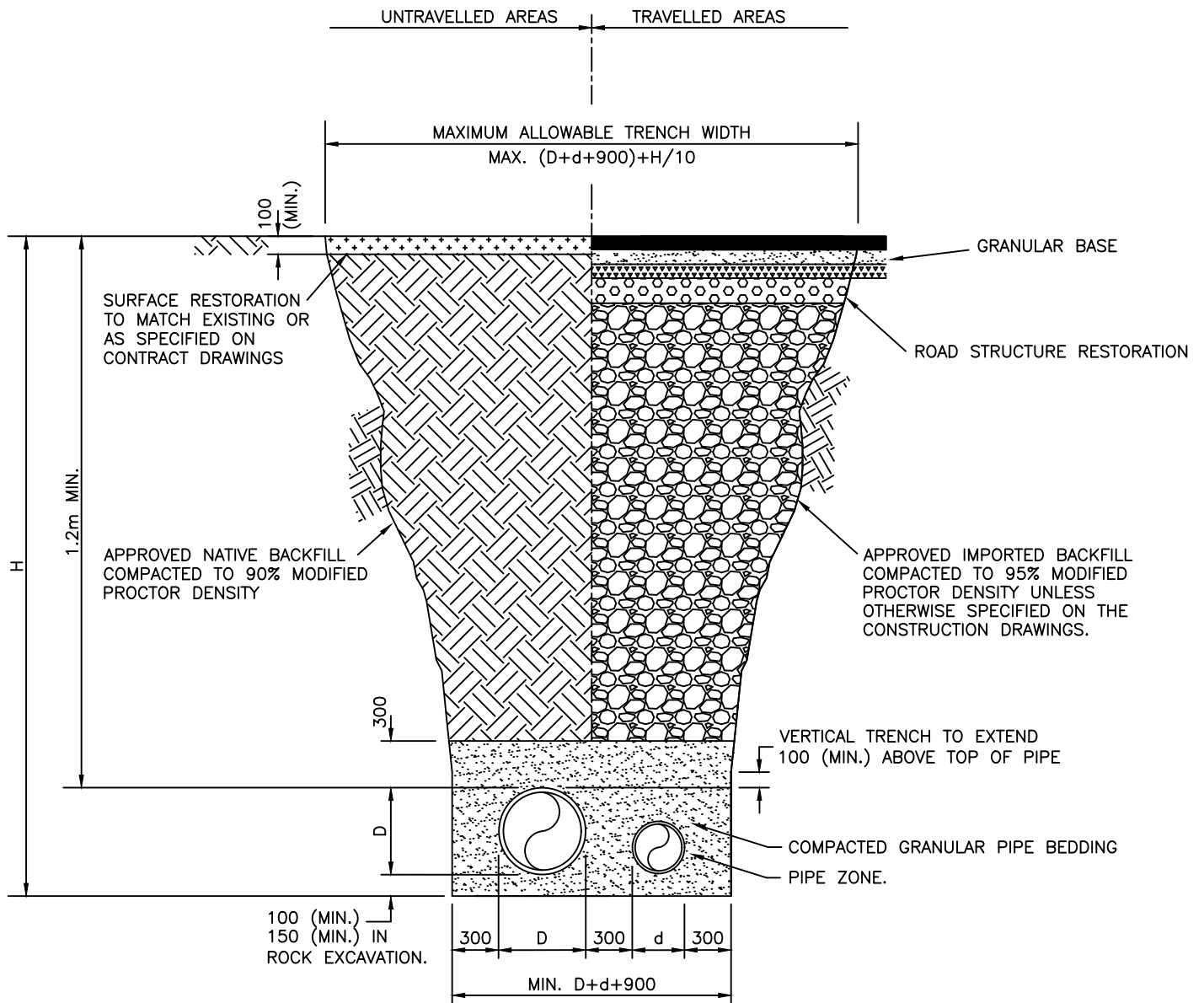


SECTION A-A
SHOWING CONNECTIONS

City of
Parksville

TYPICAL LOCATION OF SERVICE CONNECTIONS TO RESIDENTIAL VACANT LOTS

Scale	N.T.S.
Drawn	GC
Date:	NOV 2017
Dwg. No.	S1



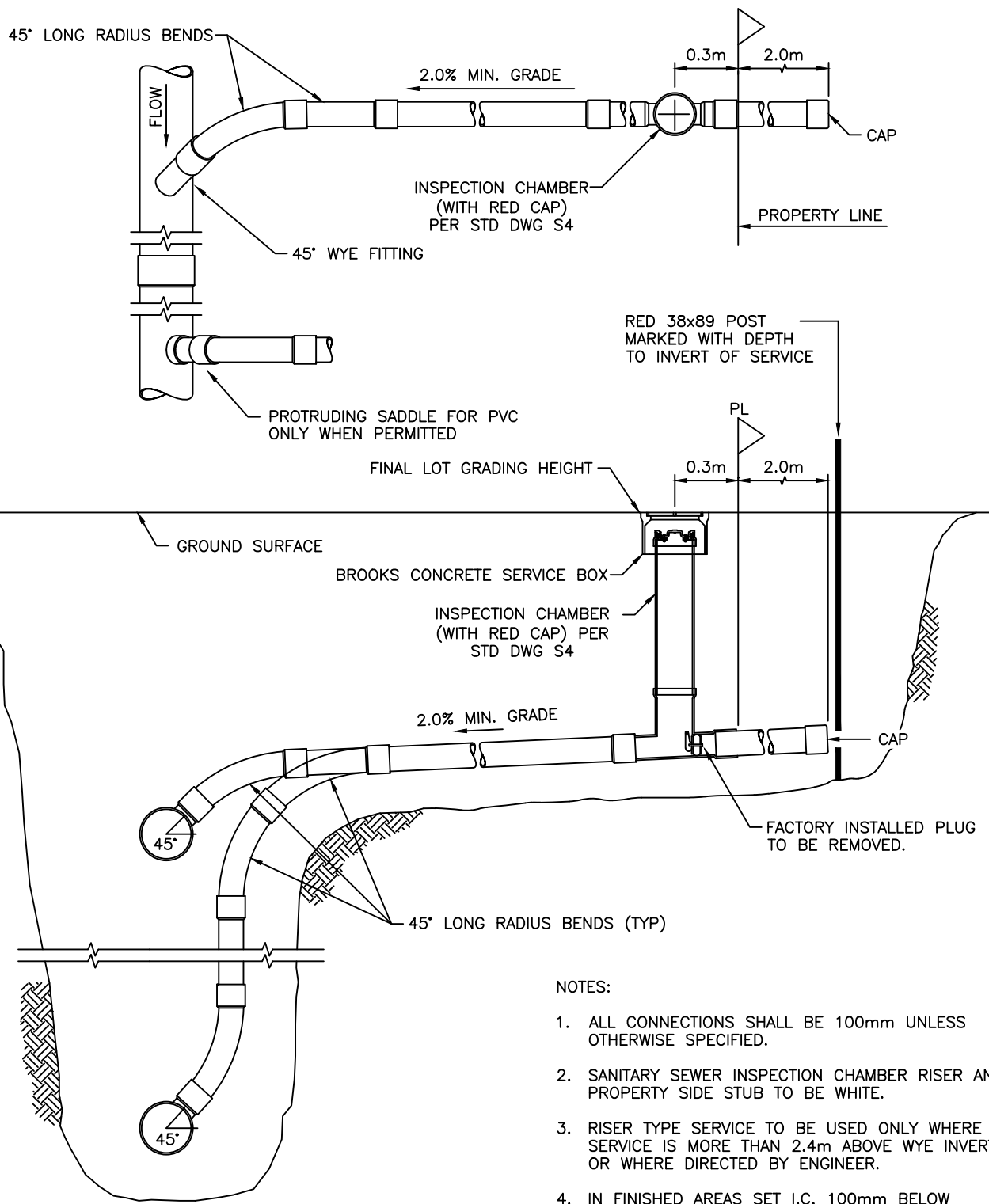
D(d) = OUTSIDE DIAMETER

DEPTH OF BEDDING MATERIAL BELOW PIPE

I.D.	d(MIN.)
≤ 675mm	75mm
750mm - 1500mm	100mm
>1500mm	150mm

NOTES:

1. UNDER THE TRAVELLED PORTION OF THE ROAD AND DRIVEWAYS, OR WITHIN 1m OF THE EDGE OF THE TRAVELLED ROAD, THE TRENCH WILL BE BACKFILLED WITH COMPACTED 75mm MINUS PIT RUN OR EQUAL UP TO BOTTOM OF ROAD SUB-BASE.
2. FOR EXCAVATION IN ROCK OR OTHER INCOMPRESSIBLE MATERIALS, THE TRENCH SHOULD BE OVER-EXCAVATED A MINIMUM OF 150mm FROM THE OUTSIDE COUPLINGS OR BELLS OF THE PIPES AND REFILLED WITH GRANULAR BEDDING MATERIAL.
3. ALL BEDDING MATERIALS TO BE COMPACTED IN 150 mm LIFTS TO A MINIMUM 95% MODIFIED PROCTOR DENSITY IN COMPLIANCE WITH ASTM D1557.

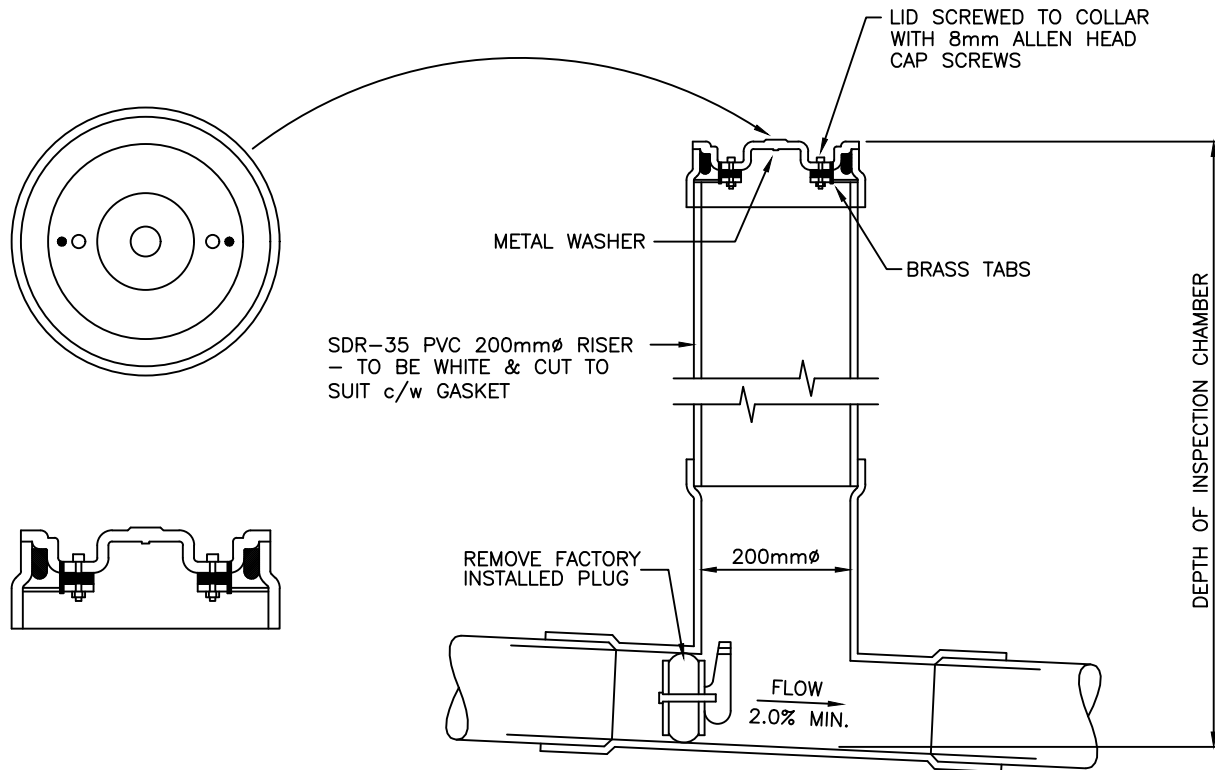


- NOTES:
1. ALL CONNECTIONS SHALL BE 100mm UNLESS OTHERWISE SPECIFIED.
 2. SANITARY SEWER INSPECTION CHAMBER RISER AND PROPERTY SIDE STUB TO BE WHITE.
 3. RISER TYPE SERVICE TO BE USED ONLY WHERE SERVICE IS MORE THAN 2.4m ABOVE WYE INVERT OR WHERE DIRECTED BY ENGINEER.
 4. IN FINISHED AREAS SET I.C. 100mm BELOW FINISHED GROUND PER STD DWG S4
 5. ALL DIMENSIONS SHOWN IN MILLIMETRES UNLESS OTHERWISE STATED

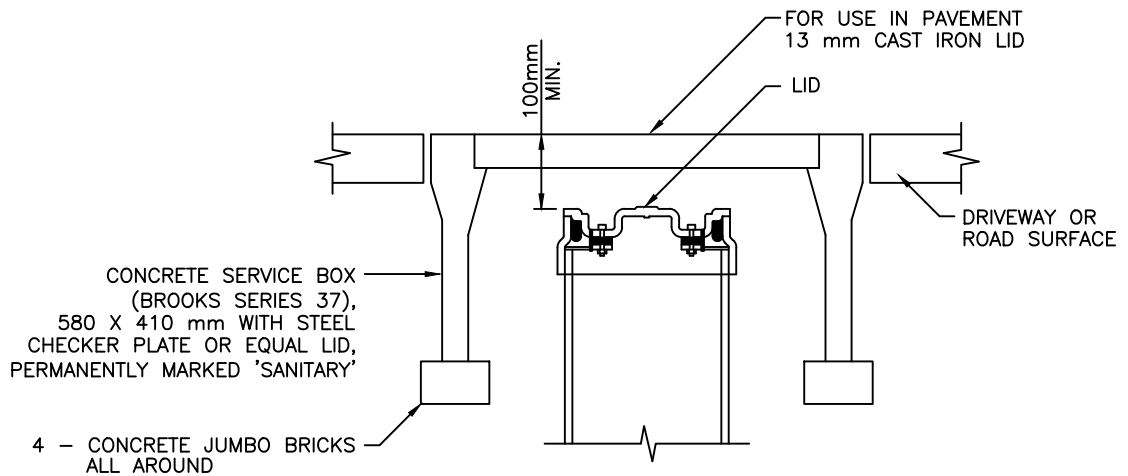
City of
Parksville

SANITARY SEWER CONNECTION

Scale	N.T.S.
Drawn	G.C.
Date:	NOV 2017
Dwg. No.	S3

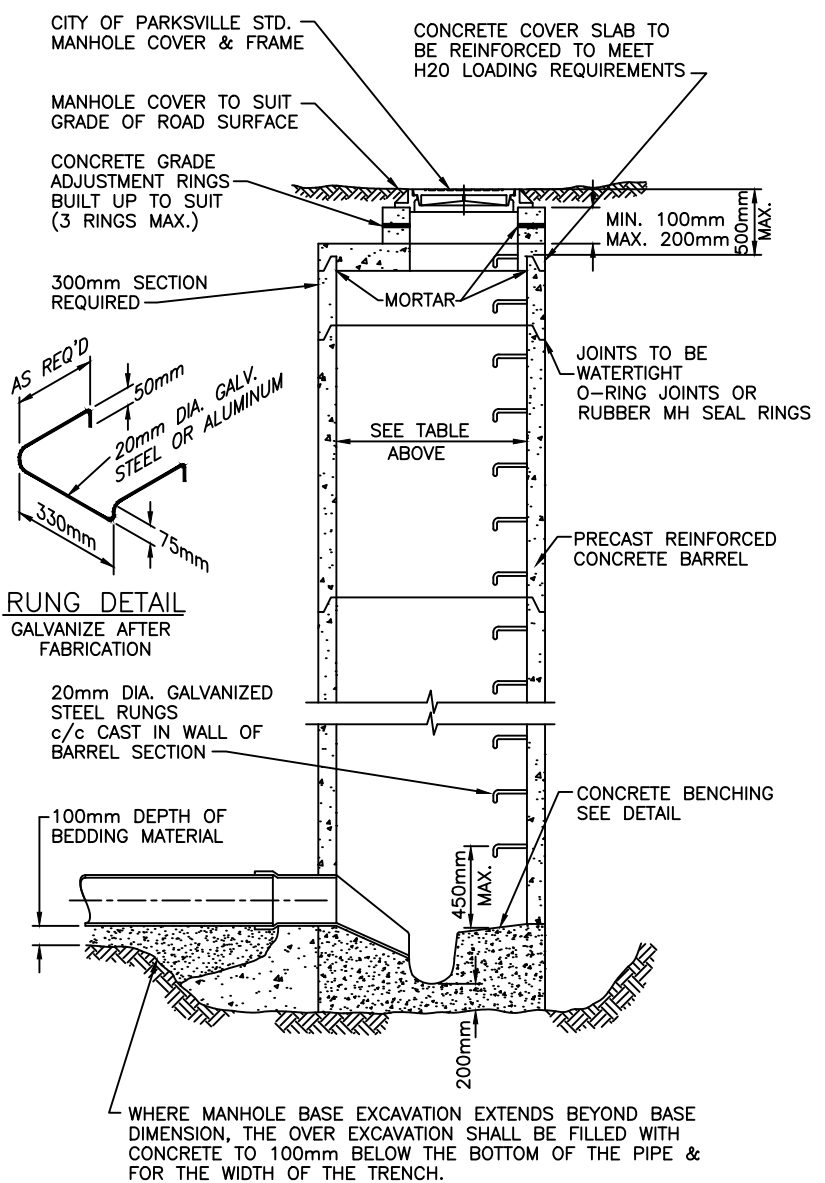
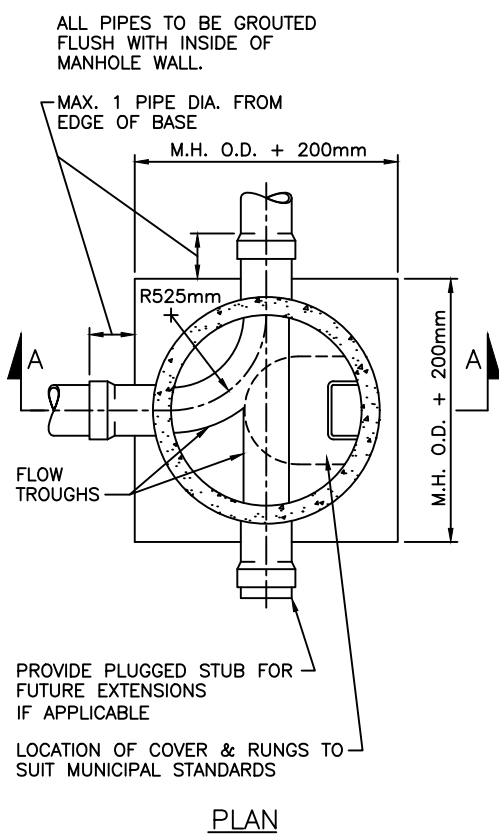


NOTE:
100mm ϕ SANITARY SERVICE LINE CONNECTION, CAP RED



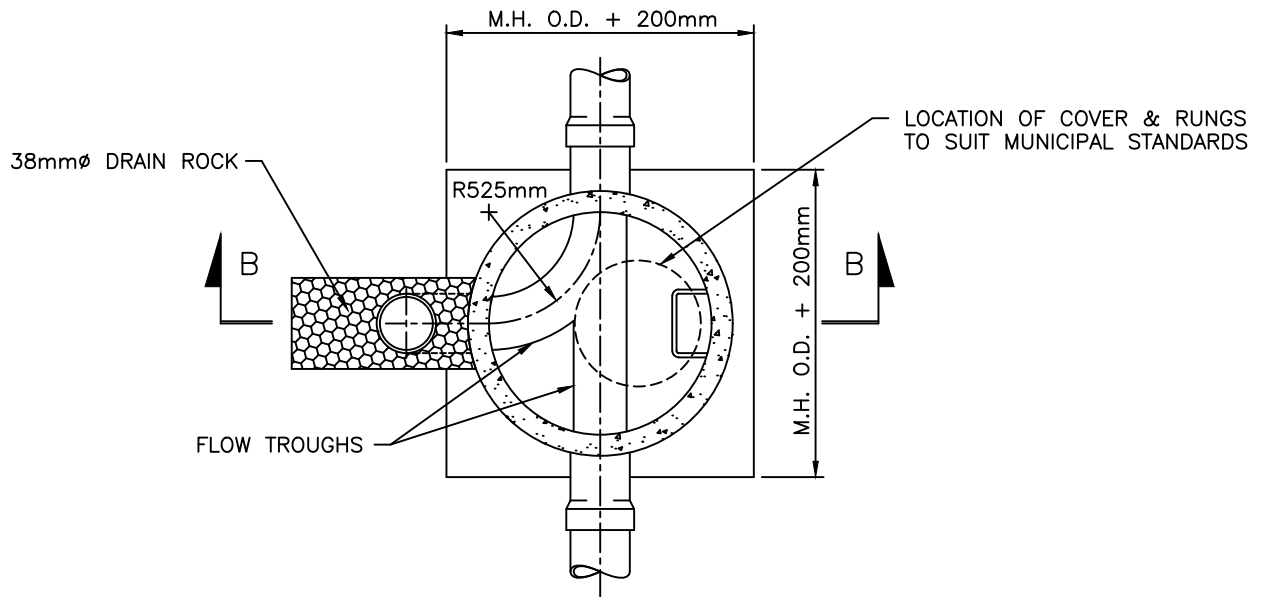
INSTALLATION OF INSPECTION CHAMBER

INSIDE PIPE DIA.	INSIDE MANHOLE DIA.
450mm AND LESS	1050mm
525mm - 600mm	1200mm
675mm - 750mm	1350mm

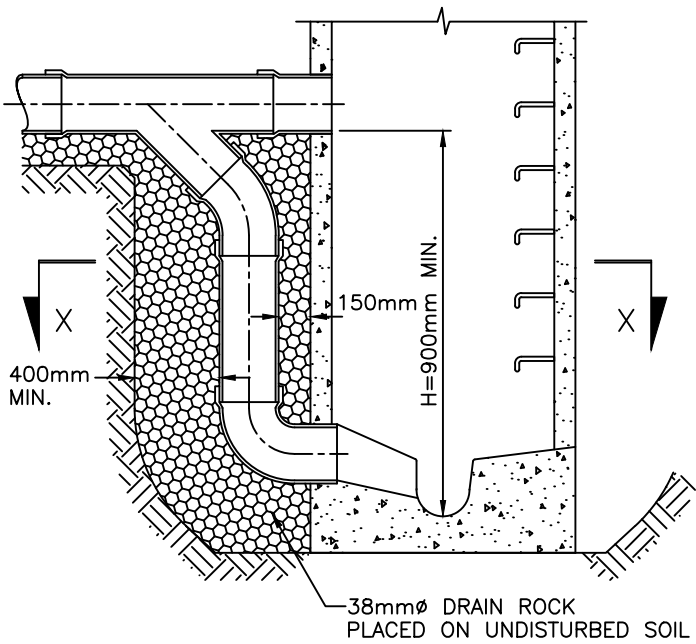


SECTION A-A
TYPICAL MANHOLE
PRECAST REINFORCED CONCRETE BARREL TO ASTM C-478 M

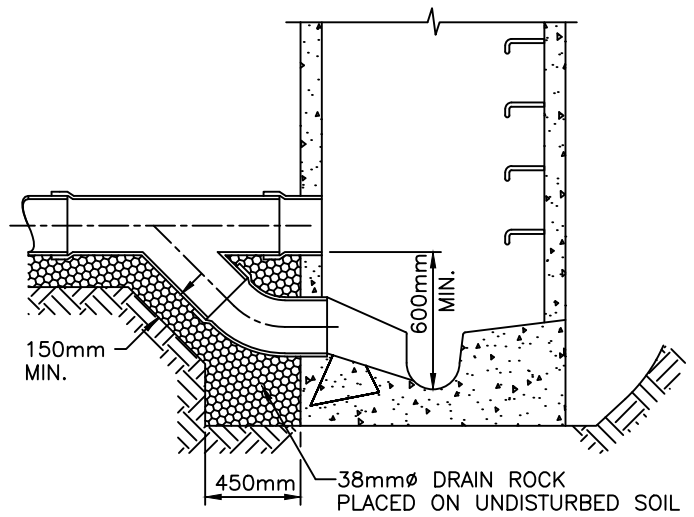
LADDER PER CURRENT WSCB REQUIREMENTS



PLAN AT SECTION X-X SHOWING DROP



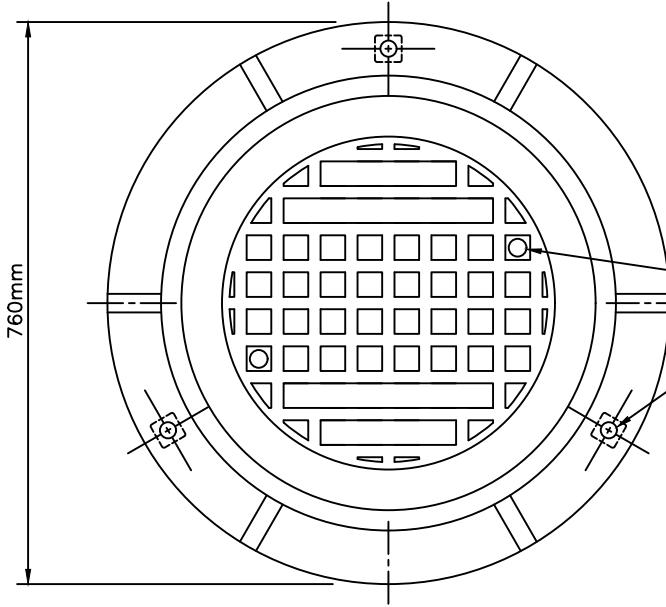
SECTION B-B
DROP MANHOLE TYPE I



SECTION B-B
DROP MANHOLE TYPE II

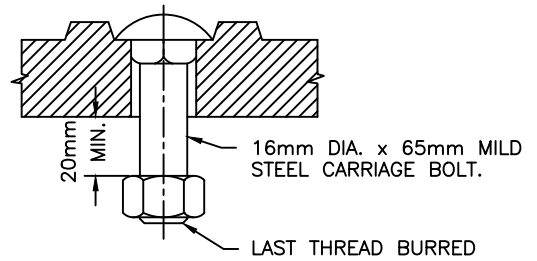
NOTE:

REFERRING TO "CITY OF PARKSVILLE SEWER".
 LETTERING SHALL BE 25mm FLATTENED FACE GOTHIC AND
 SHALL BE RAISED TO THE SAME LEVEL AS THE TOP OF
 THE RIBS.

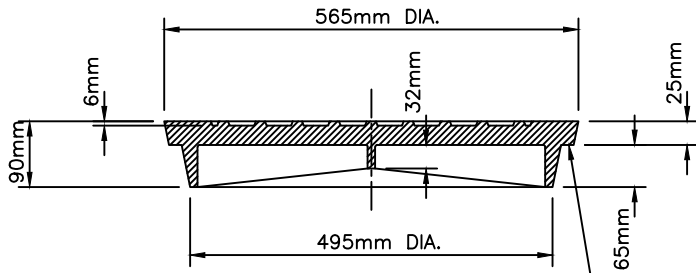


22mm DIA. HOLE FOR CARRIAGE BOLT REQUIRED AS SHOWN.
 22mm DIA. LEVELLING HOLES WITH POCKET FOR SQUARE NUT.

PLAN

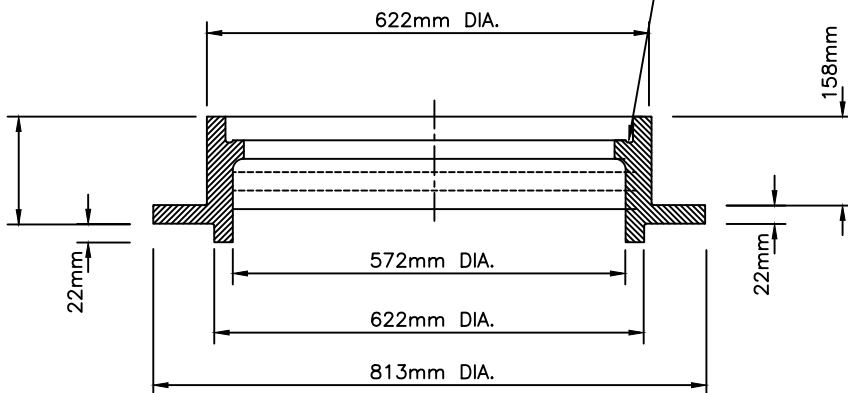


CARRIAGE BOLT DETAIL
 (FOR SAN MANHOLES ONLY)



COVER

MACHINE SURFACE FOR NON ROCKING FIT IN ALL POSITIONS.
 ALLOW 2mm RAISED FACE IN CASTING FOR MACHINING.

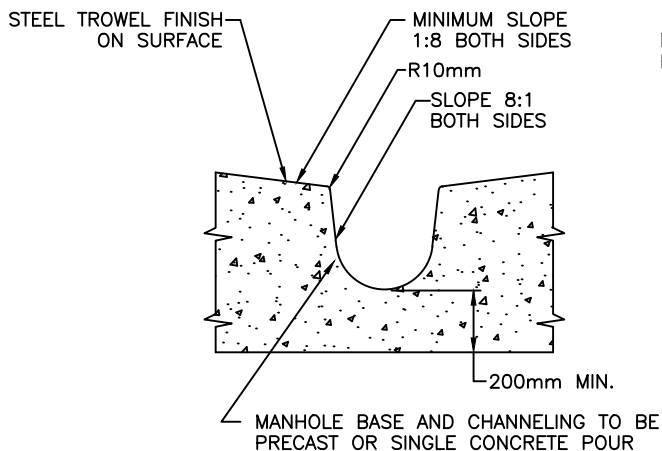


FRAME

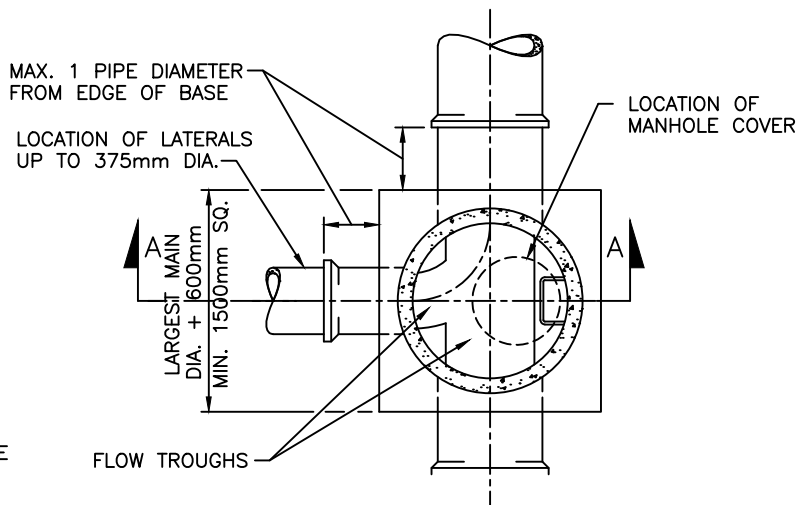
TYPE - DOBNEY FOUNDRY No. C-18 OR EQUIVALENT

APPROXIMATE WEIGHTS

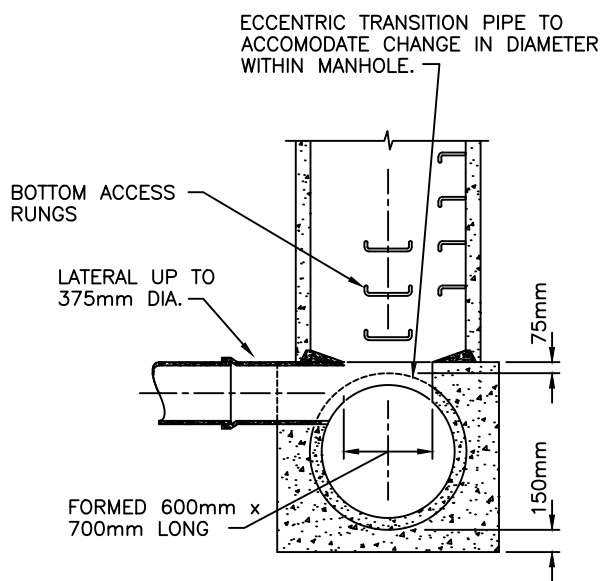
COVER - 66 kg
 FRAME - 84 kg



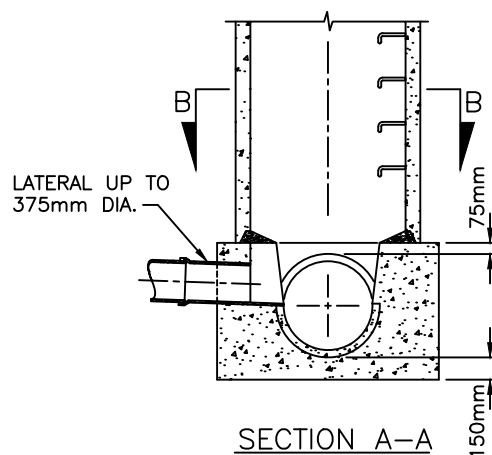
INVERT CHANNELLING IN MANHOLE



SECTION B-B



BASE SECTION THRU MANHOLES FOR PIPE 600mm DIA TO 750mm DIA.

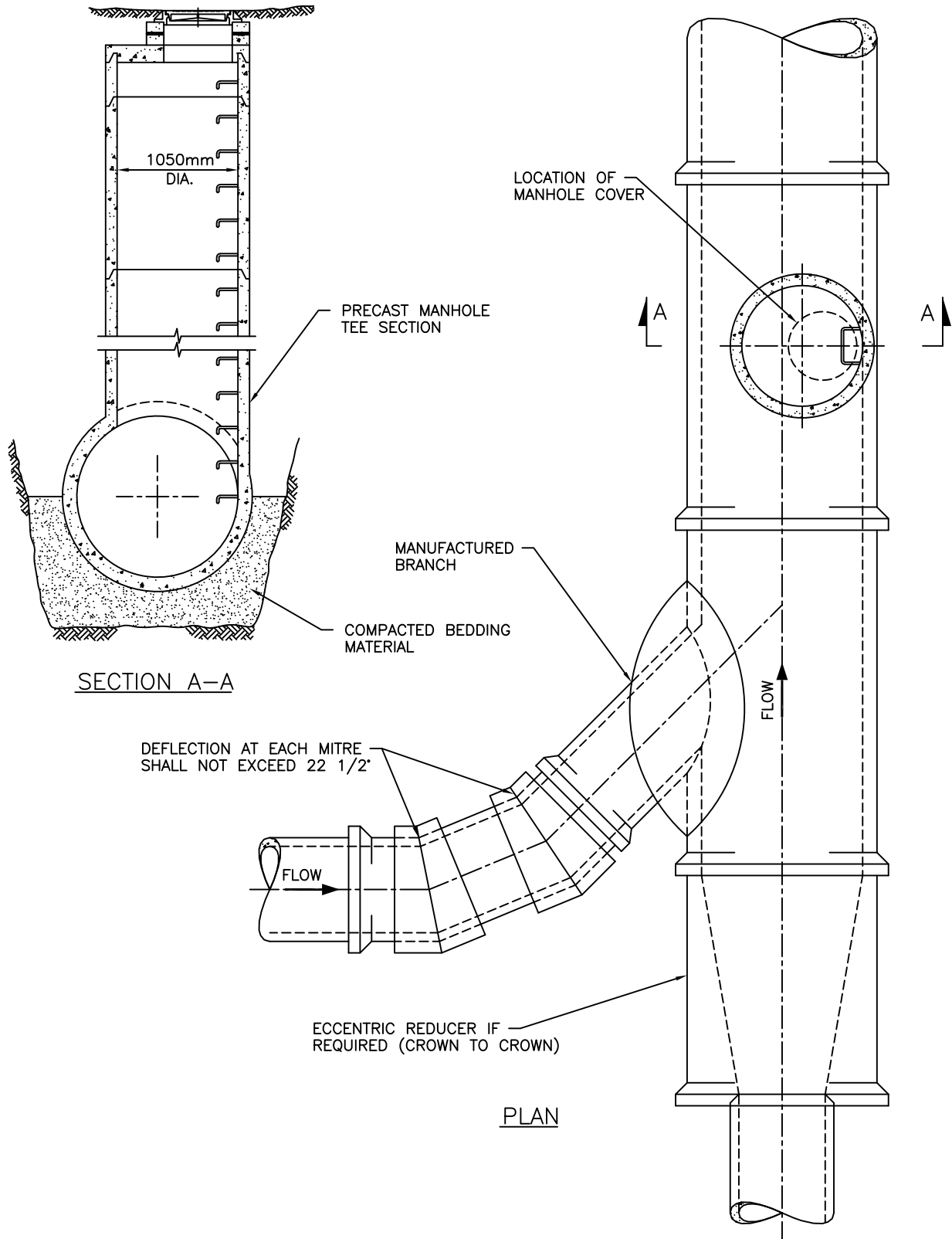


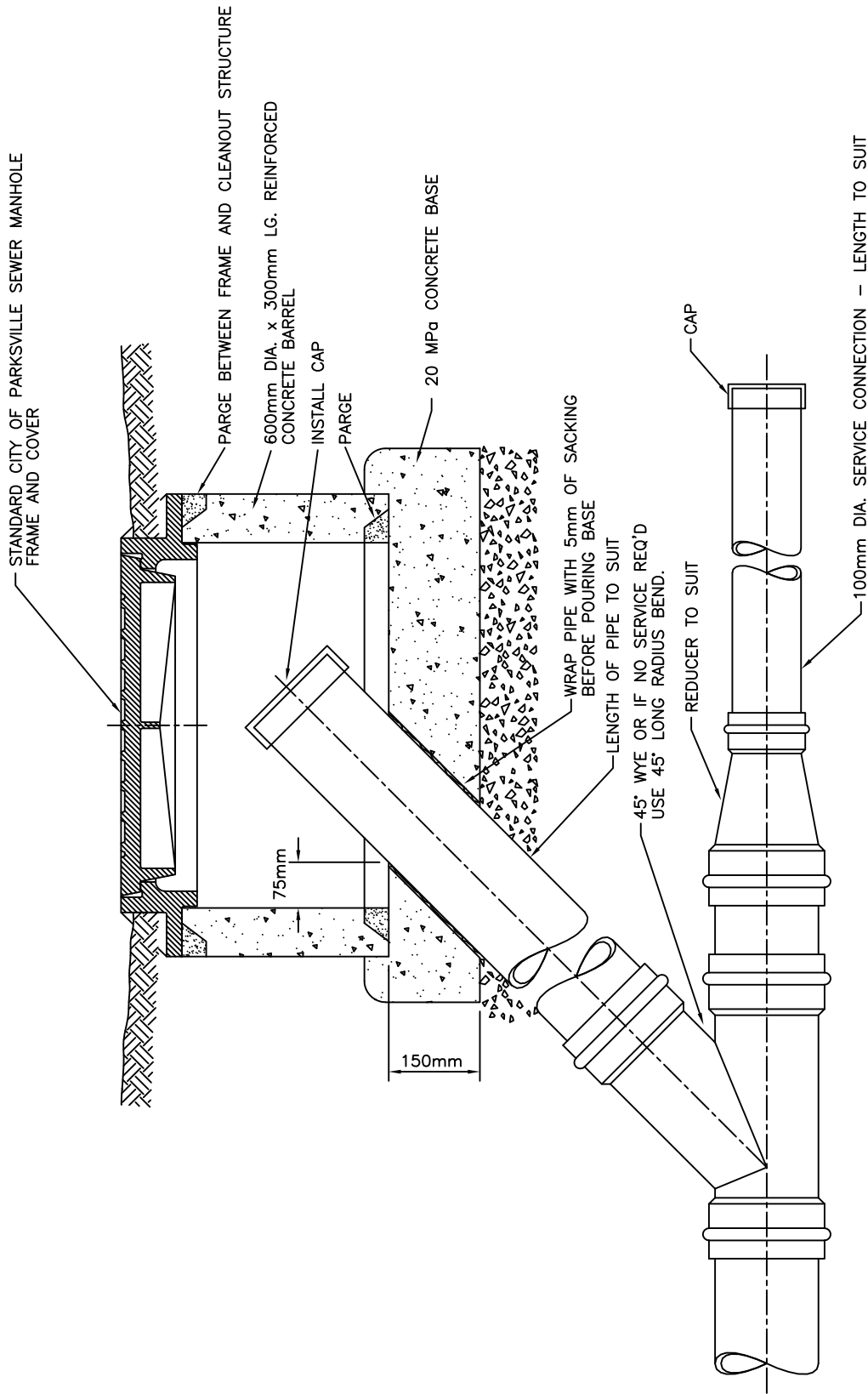
BASE SECTION THRU MANHOLES FOR PIPE UP TO 600mm DIA. INCLUSIVE

NOTES:

1.) THE MANHOLES DETAILED ON THIS STANDARD DRAWING SHALL BE USED ONLY WHERE LATERAL CONNECTIONS ARE 375 mm AND SMALLER. WHERE LATERALS 450 mm AND GREATER INTERSECT, THE MANHOLES SHALL BE CONSTRUCTED TO THE GUIDELINES SET BY DRAWING S5.

2.) MINIMUM MANHOLE SIZING REFER TO STANDARD DRAWING S5.





SECTIONAL ELEVATION

NOTES:

- 1.) CLEANOUTS LOCATED ON GRAVEL ROADS OR SHOULDERS REQUIRE HOT MIXED ASPHALT APRONS EXTENDING 3m ON ALL SIDES OF THE CLEANOUT OR FOR THE WIDTH OF GRAVEL SHOULDER IF LOCATED ADJACENT TO THE ROAD PAVEMENT.

BROOKS No.66 CONCRETE SERVICE BOX
OR EQUIVALENT c/w CONCRETE LID.

INSTALL CAP

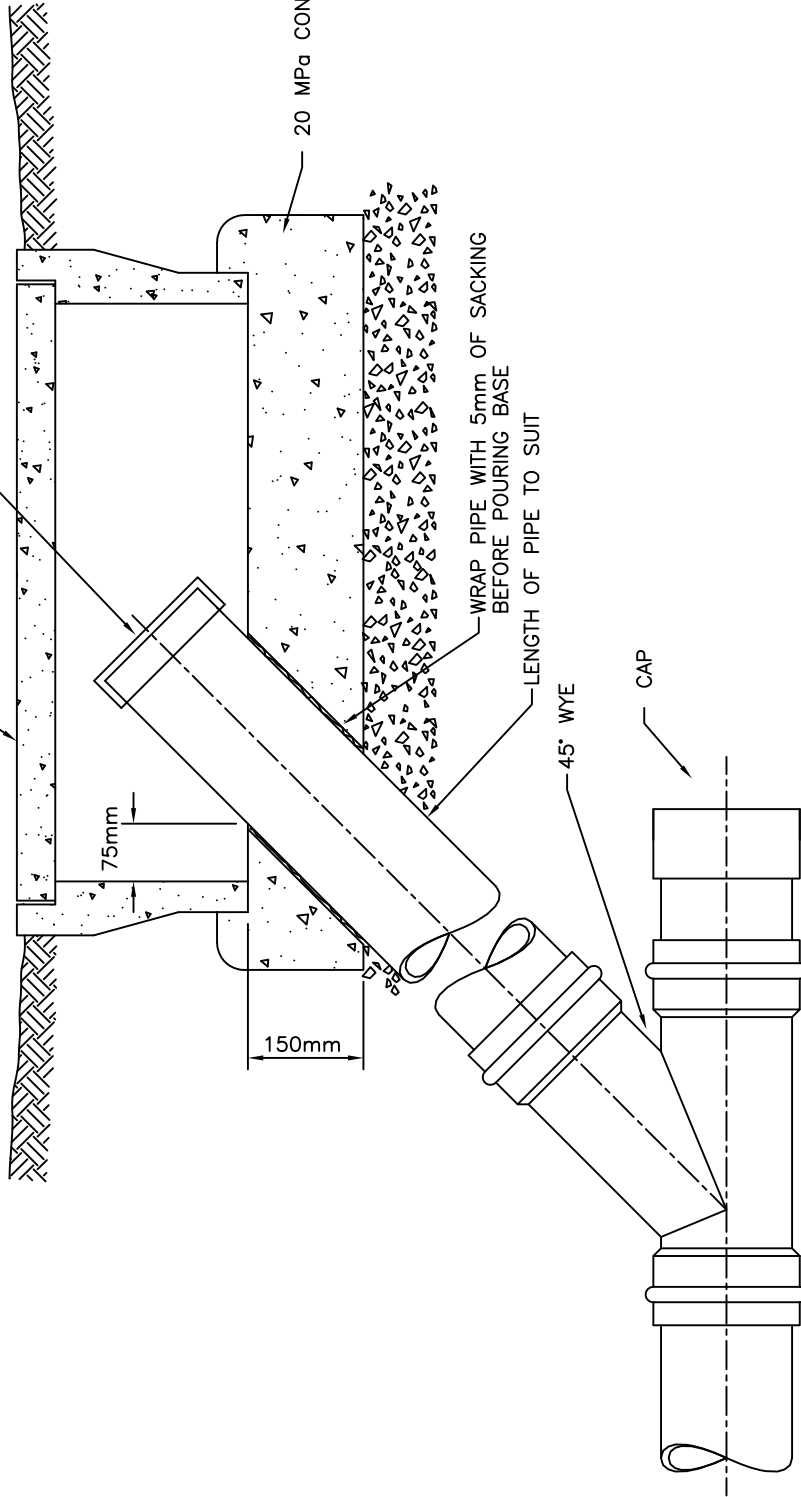
20 MPa CONCRETE BASE

WRAP PIPE WITH 5mm OF SACKING
BEFORE POURING BASE

LENGTH OF PIPE TO SUIT

45° WYE

CAP



SECTIONAL ELEVATION

NOTES:
FOR USE IN EASEMENTS ONLY

City of
Parksville

CLEANOUT STRUCTURE TYPE 2

Scale	N.T.S.
Drawn	JTD
Date:	JAN 2015
Dwg. No.	S11