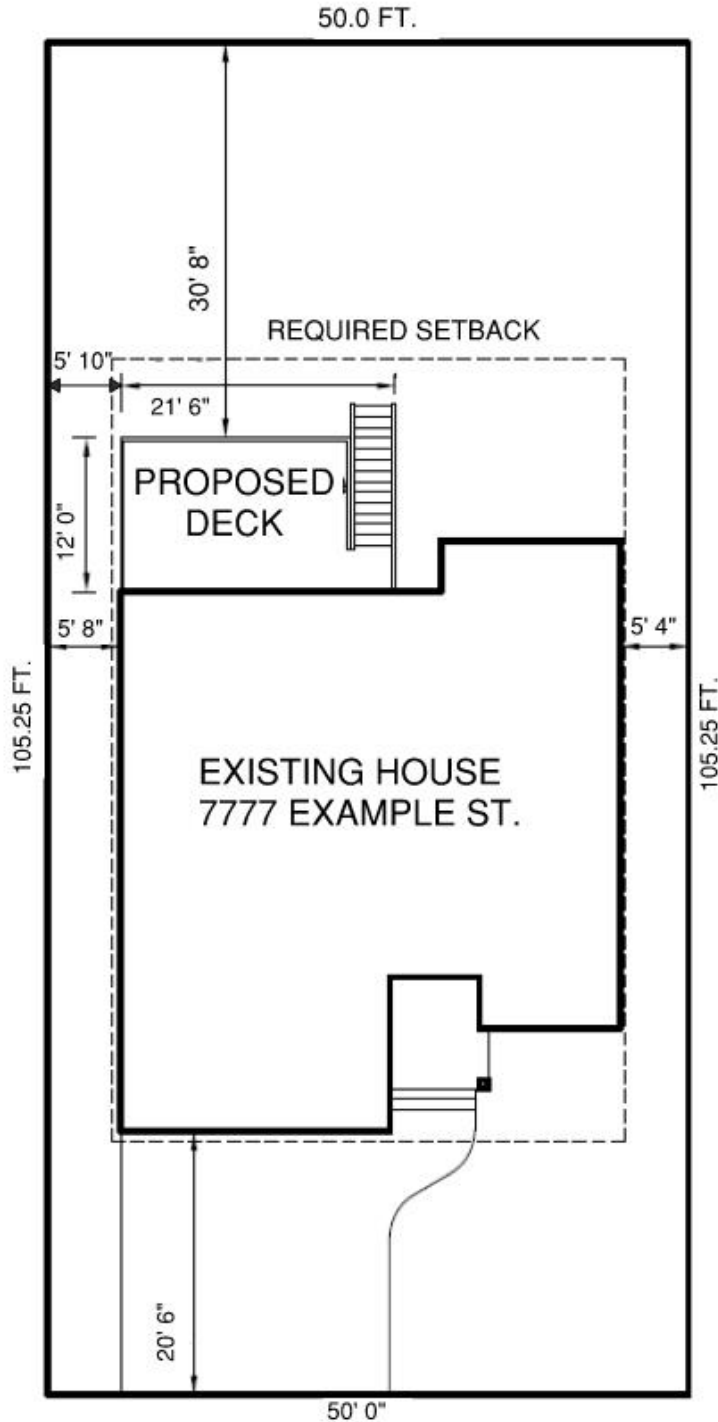




## Sample Plans: Deck Addition to a Single Family Dwelling



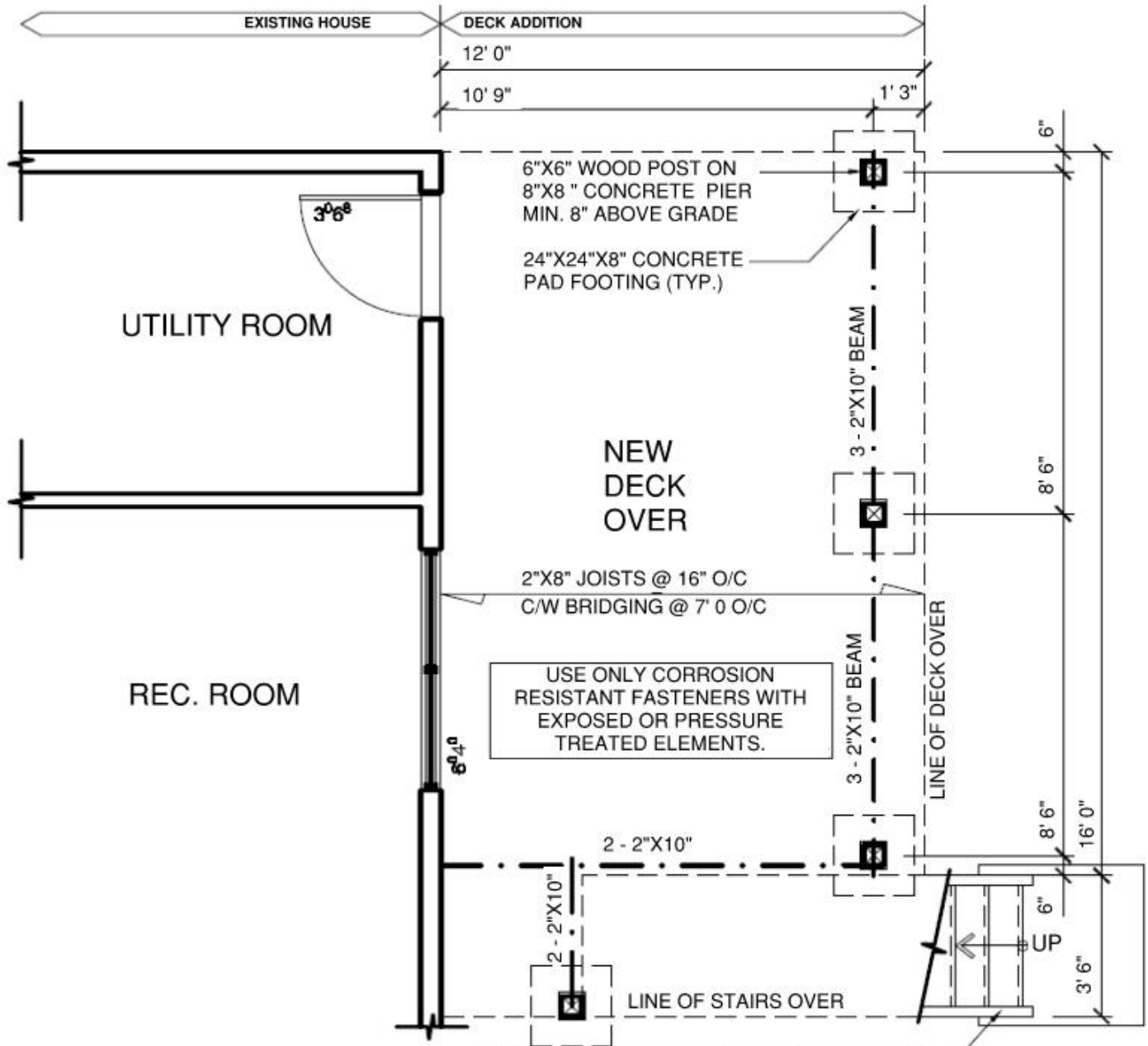
### SITE PLAN

EXAMPLE ST.

SCALE: 1/16" = 1'



# Sample Plans: Deck Addition to a Single Family Dwelling



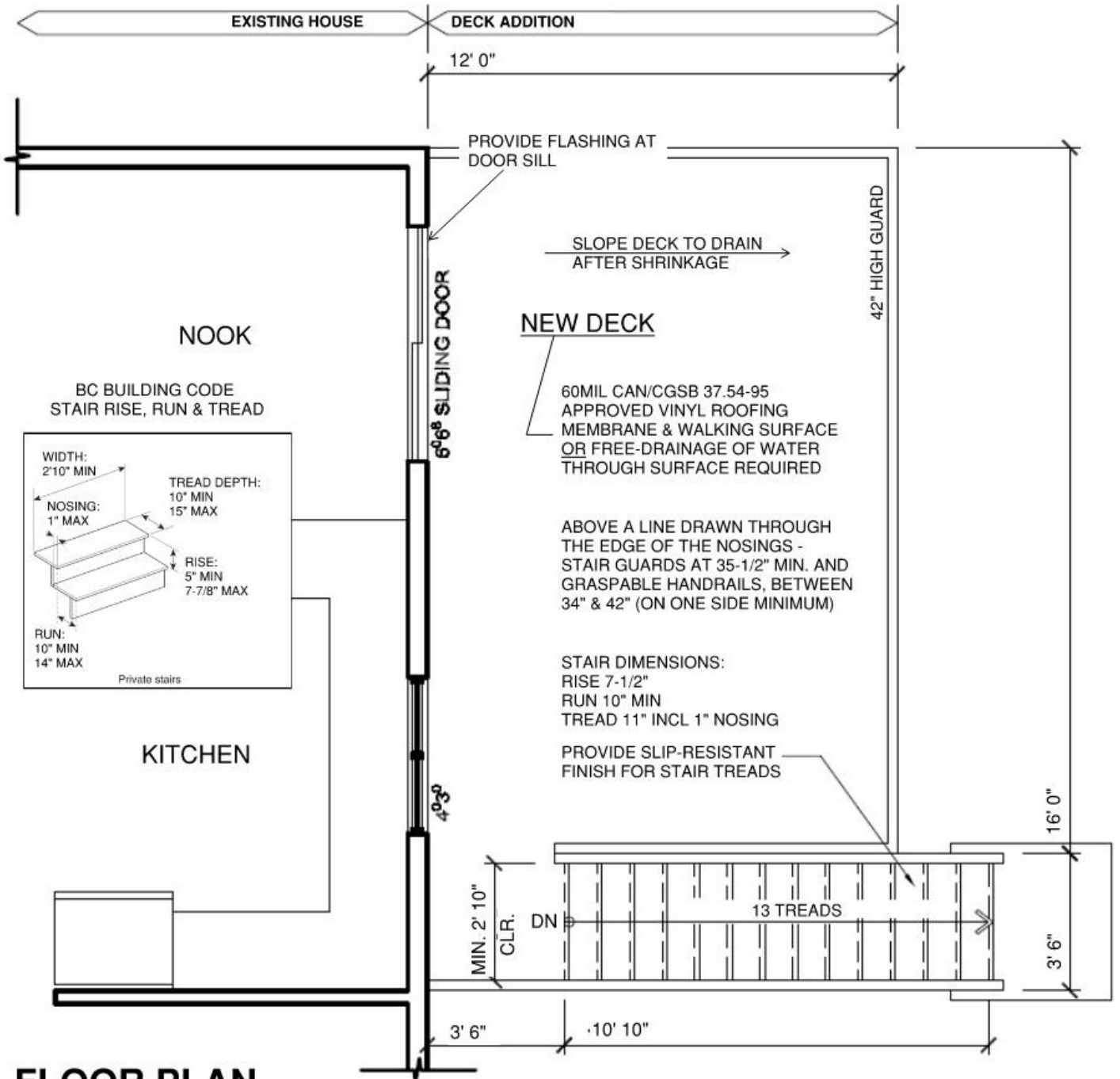
## FOUNDATION PLAN

SCALE: 1/4" = 1'

ALL STRUCTURAL WOOD ELEMENTS WITHIN 18" OF GRADE SHALL BE PRESSURE-TREATED TO RESIST TERMITES (BC BUILDING CODE 9.3.2.9(3))

\*\*Note: Actural plans must be drawn on minimum 11"x 17" size paper. Plans must NOT be drawn on graph or lined paper.

## Sample Plans: Deck Addition to a Single Family Dwelling

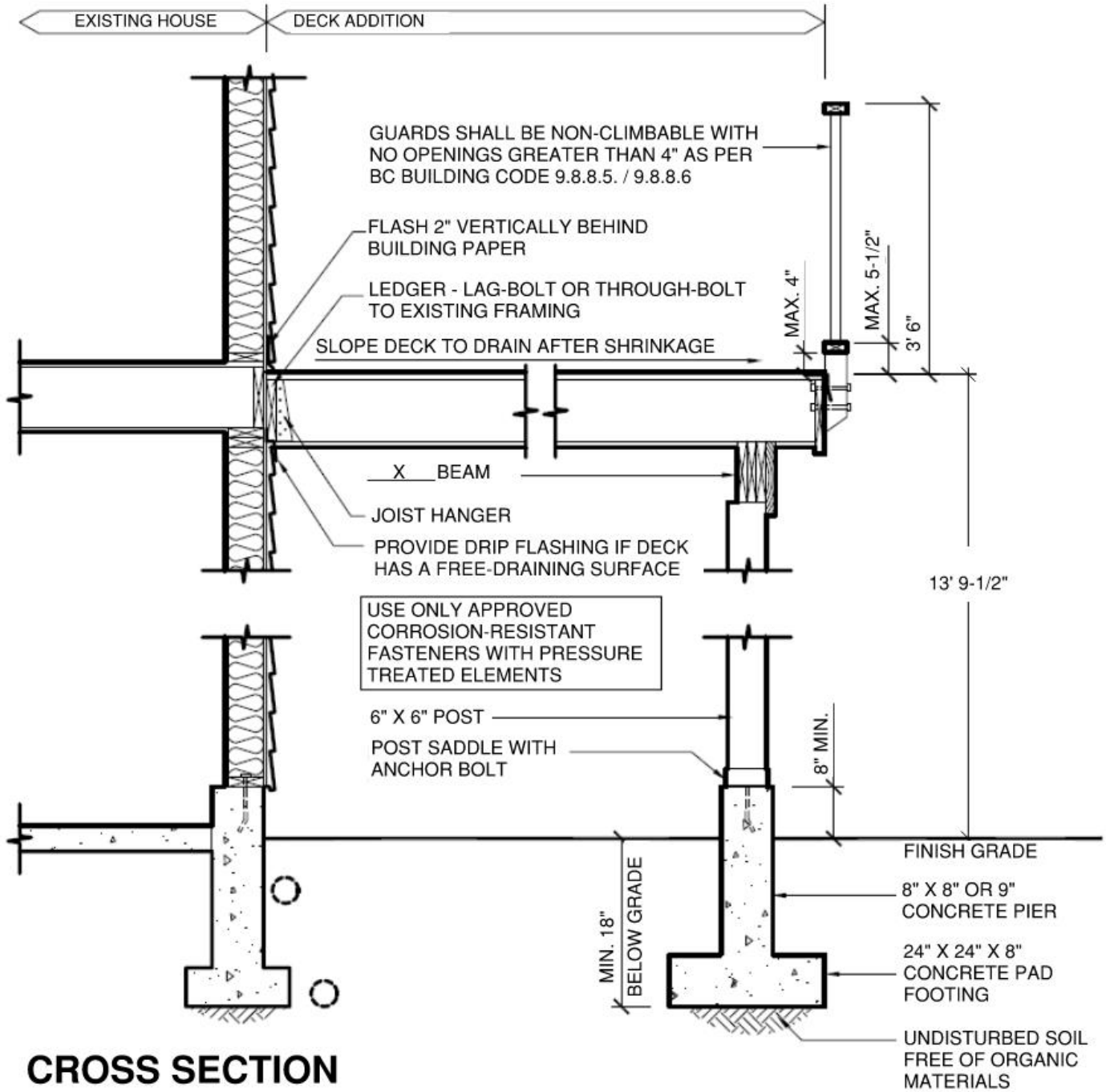


### FLOOR PLAN

SCALE: 1/4" = 1'0"



# Sample Plans: Deck Addition to a Single Family Dwelling

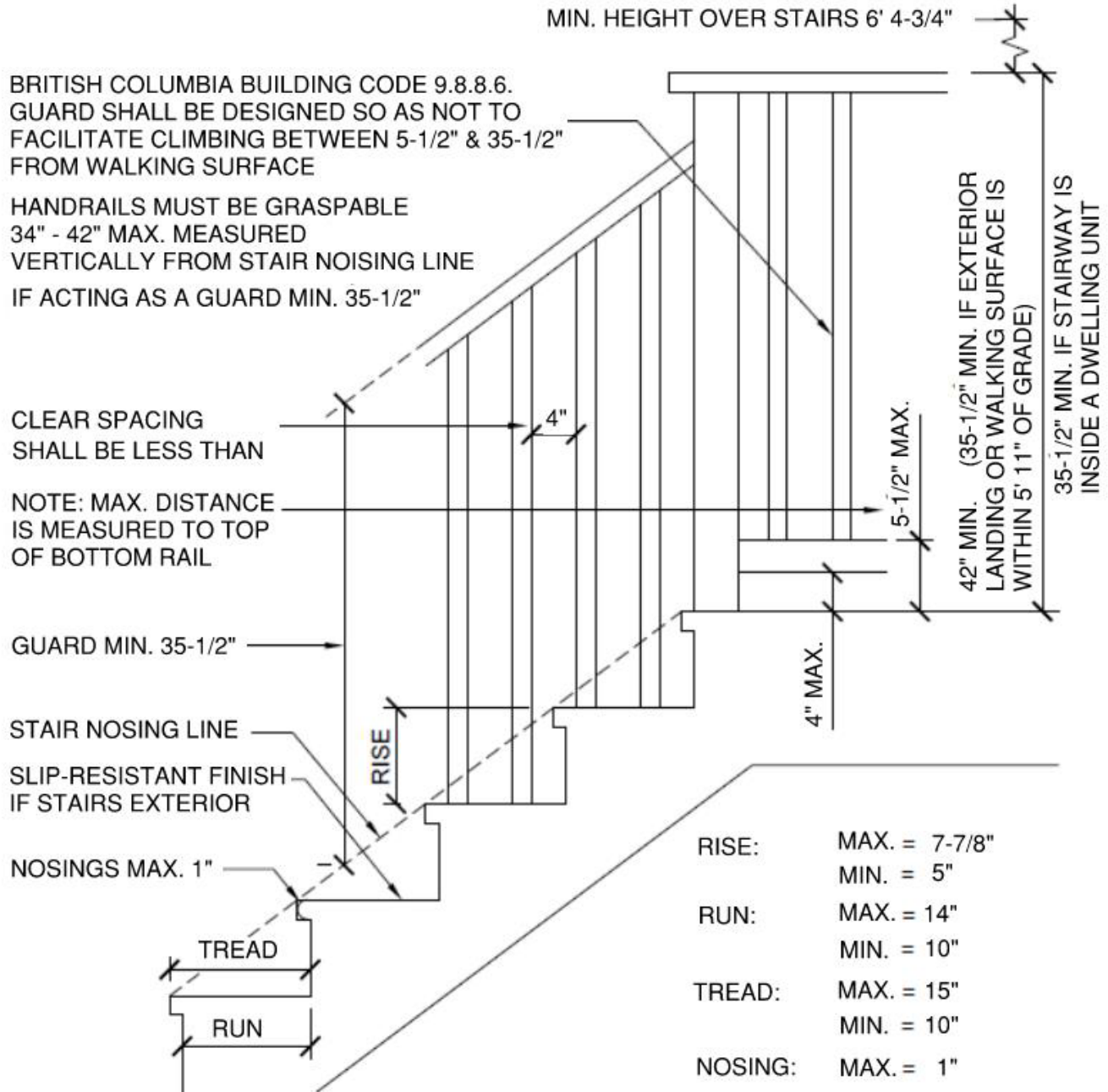


## CROSS SECTION

SCALE: 1/2" = 1'0"

\*\*Note: Actual plans must be drawn on minimum 11x17" size paper. Plans must NOT be drawn on graph or lined paper.

## Typical Residential Stair Detail



STAIR WIDTH: MIN. 34" CLEAR

ONE HANDRAIL REQUIRED ON EXTERIOR STAIRS WITH MORE THAN THREE RISERS AND INTERIOR STAIRS WITH MORE THAN TWO RISERS SERVING NOT MORE THAN ONE DWELLING UNIT