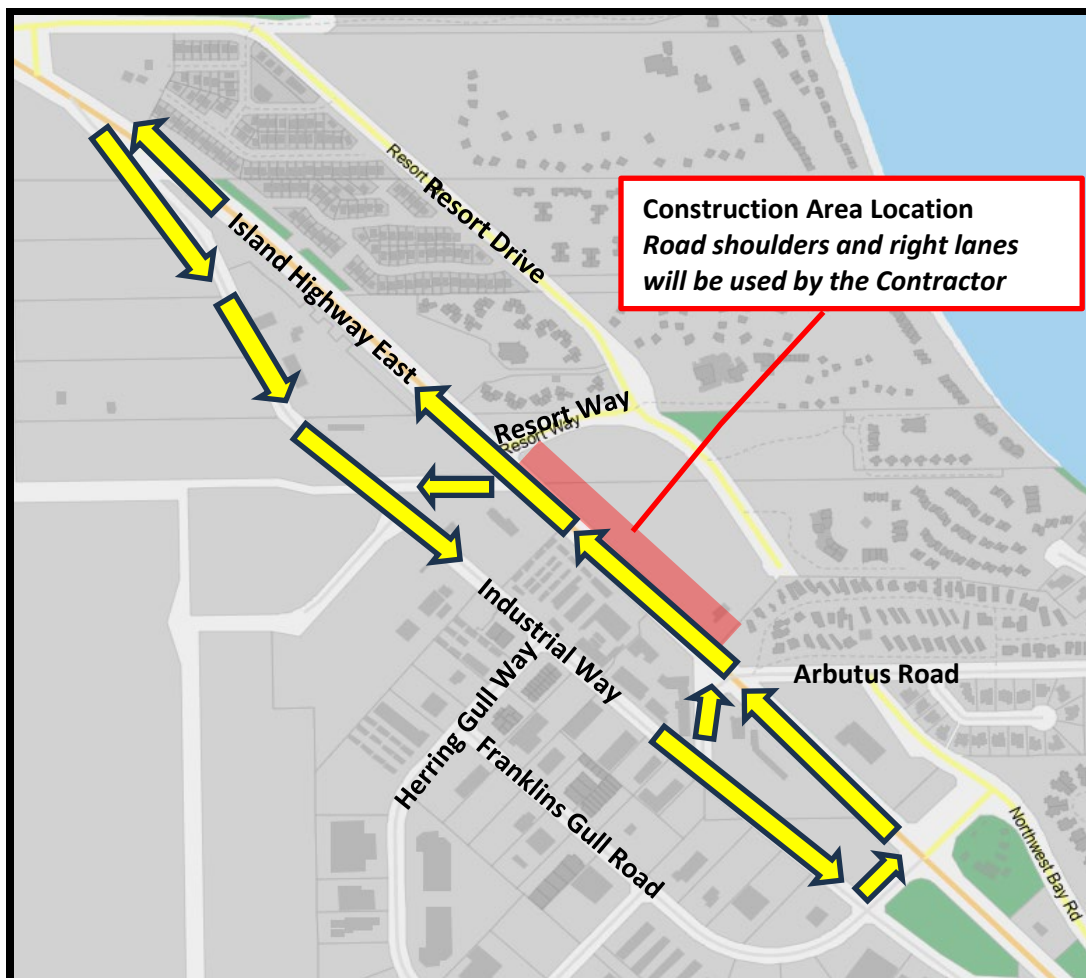


**Distribution:** RCMP, Ambulance, City of Parksville Fire Department, City of Parksville, Manager of Communications, Parksville Downtown Business Association, RDN Transit Services, Progressive Waste Solutions, Parksville/Qualicum Beach School District No. 69, Manager of Transportation

**Location:** Island Highway East between Arbutus Road and Resort Way

**Dates:** September 8 to 19, 2025, 7 am to 7 pm daily

**Details:** Utility construction on the Island Highway East between Arbutus Road and Resort Way September 8 to 19, 2025, 7 am to 7 pm. Eastbound traffic will be detoured to Industrial Way down to the Franklin's Gull intersection and westbound traffic will remain on the Island Highway East with a lane shift to accommodate work crews. Traffic will be controlled in all directions for vehicles, cyclists and pedestrians.



**EMERGENCY VEHICLES WILL HAVE ACCESS THROUGH THIS WORK AREA,  
PLEASE CHOOSE AN ALTERNATE ROUTE AND AVOID THIS AREA, IF POSSIBLE.**