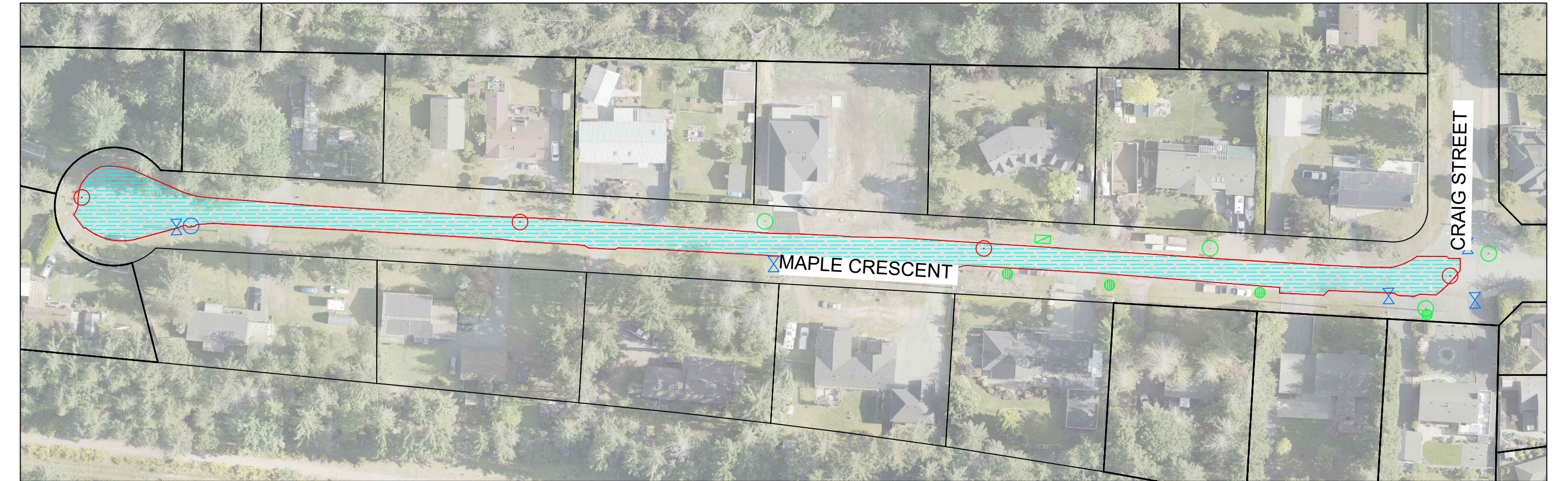
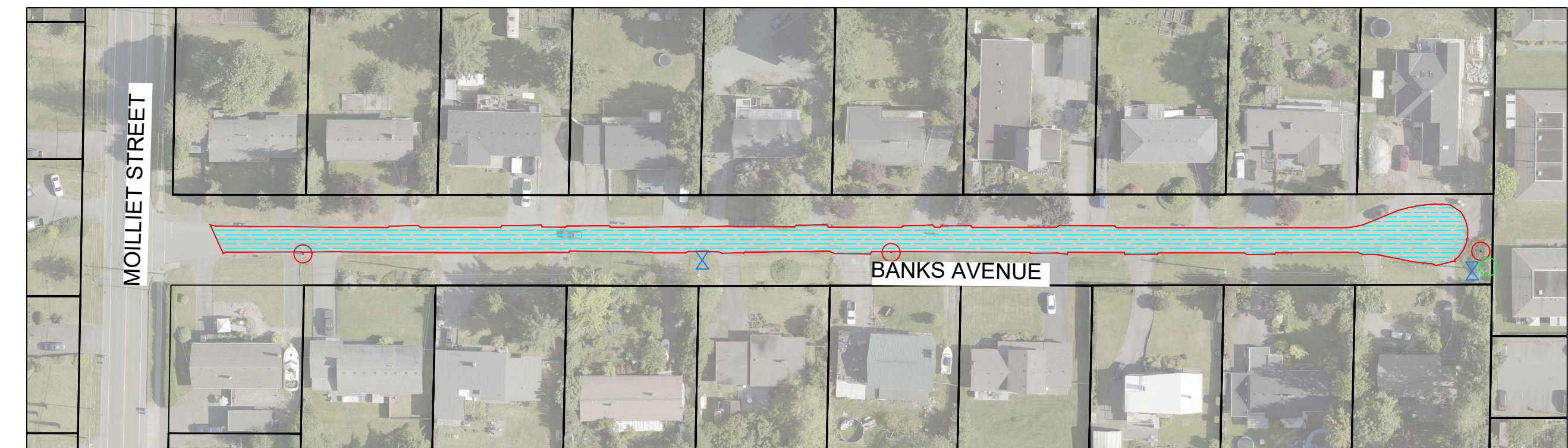


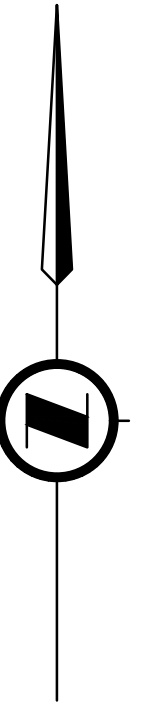
FRANKLINS GULL ROAD AND INDUSTRIAL WAY



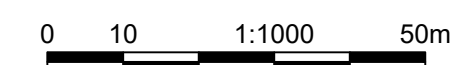
MAPLE CRESCENT



BANKS AVENUE



NOTE:  
 • ORTHOGRAPHIC IMAGERY & LEGAL CADASTRE LOCATIONS ARE APPROXIMATE ONLY  
 • THIS DRAWING IS SCHEMATIC ONLY AND IS PROVIDED ONLY FOR THE CONVENIENCE OF THE USER.  
 • ALL USERS MUST SATISFY THEMSELVES AS TO THE REQUIRED EXTENTS OF ANY WORKS BEFORE UNDERTAKING THEM.



Prepared by:  
 City of Parksville  
 Engineering Department  
 P O Box 1390,  
 100 Jensen Avenue East,  
 Parksville, BC V9P 2H3  
 Office: 250 951 2484  
 Fax: 250 954 4657

RJD 20260604  
 Design by Date  
 RJD 20260604  
 Drawn by Date  
 AD 20260604  
 Checked by Date  
 AD 20260604  
 Approved by Date

No.	Date	Revisions	By
A	20260604	ISSUED FOR TENDER	RJD

Developer  
 Location  
 PARKSVILLE

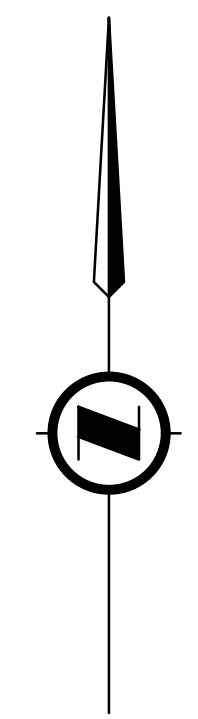


Project  
 2026 PAVEMENT PROGRAM  
 Title  
 KEY PLAN

City of Parksville Project No.  
 5400-10-PAV  
 City of Parksville Drawing No.

Scale  
 Horiz: 1:1000  
 Vert:  
 Consultant's Drawing No.  
 5400-10-2601  
 Sheet No.  
 01 OF 04  
 Revision  
 A

Jun 04, 2026 - 2:27pm P:\Users\st.erna & Ops\Record Mgmt\GENERAL OPERATIONS FILES\5400-10 PAV ENG - Paving Projects\2026\WORKING\5400-PAV-ENG-2026.dwg  
 Municipal Drawing No.



LEGEND	
	STORM MANHOLE
	STORM CATCH BASIN
	SANITARY MANHOLE
	WATER VALVE
	SURVEY MONUMENT
	NEW PAVEMENT EXTENTS
	MILLING EXTENTS
	100mm YELLOW THERMOPLASTIC PAINT

**FRANKLIN'S GULL AND INDUSTRIAL - NOTES**

MEASUREMENTS ARE APPROXIMATE AND MUST BE CONFIRMED BY TENDERER.

**MILLING**  
 FULL DEPTH MILLING REQUIRED.  
 60mm ANTICIPATED THICKNESS.  
 IF AREAS OF THICKER OR THINNER ASPHALT ARE ENCOUNTERED, CONFIRM REQUIRED MILLING DEPTH WITH CONTRACT ADMINISTRATOR.  
 MILLING AREA IDENTIFIED = 3,280 m<sup>2</sup>.

**ANCILLARY PATCHING**  
 PERFORM ANCILLARY PATCHING AS DIRECTED BY CONTRACT ADMINISTRATOR.  
 REMOVAL AND REINSTATEMENT OF BASE OR SUBBASE MAY BE REQUIRED.

**BASE SHAPING**  
 RESHAPE GRANULAR ROADBEDS PRIOR TO PAVING WITH A MINIMUM 2% CROWN FITTED TO ADJACENT TOPOGRAPHY.  
 AREA = 3,280 m<sup>2</sup>  
 ESTIMATED COMPACTED VOLUME OF IMPORTED MATERIAL = 82m<sup>3</sup>  
 WEIGHT = 2.2 T/m<sup>3</sup>  
 TOTAL WEIGHT ± 180 TONNES

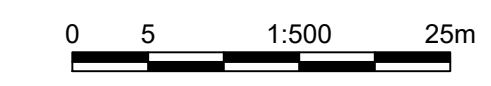
**50mm ASPHALT PAVING**  
 LENGTH = 270 m  
 AREA = 3,280 m<sup>2</sup>  
 WEIGHT ± 410 TONNES  
 3 ASPHALT CORES REQUIRED ON FRANKLIN'S GULL  
 1 ASPHALT CORE REQUIRED ON INDUSTRIAL

**SHOULDERS**  
 ADDITIONAL SHOULDER MATERIAL NOT ANTICIPATED TO BE REQUIRED DUE TO FULL DEPTH MILLING. CONTRACTOR TO REGRADE EXISTING SHOULDERS AS NECESSARY TO MEET NEW ASPHALT.

**PAINTING**  
 MEASUREMENTS ARE APPROXIMATE AND MUST BE CONFIRMED BY TENDERER.  
 TOTALS:  
 138 m - YELLOW 100mm THERMOPLASTIC PAINT  
 DIMENSIONS ARE TO CENTER OF PAINT LINES FROM EDGE OF PAVEMENT.  
 DIMENSIONS ADJACENT TO CONCRETE CURB AND GUTTER ARE MEASURED FROM EDGE OF PAVEMENT, NOT GUTTER LINE.

**NOTE:**

- ORTHOGRAPHIC IMAGERY & LEGAL CADASTRE LOCATIONS ARE APPROXIMATE ONLY
- THIS DRAWING IS SCHEMATIC ONLY AND IS PROVIDED ONLY FOR THE CONVENIENCE OF THE USER.
- ALL USERS MUST SATISFY THEMSELVES AS TO THE REQUIRED EXTENTS OF ANY WORKS BEFORE UNDERTAKING THEM.



Prepared by:  
 City of Parksville  
 Engineering Department  
 P O Box 1390,  
 100 Jensen Avenue East,  
 Parksville, BC V9P 2H3  
 Office: 250 951 2484  
 Fax: 250 954 4657

RJD	20260604	Design by	Date
RJD	20260604	Drawn by	Date
AD	20260604	Checked by	Date
AD	20260604	Approved by	Date








No.	Date	Revisions	By
A	20260604	ISSUED FOR TENDER	RJD

Developer  
 \_\_\_\_\_  
 Location  
 PARKSVILLE



Project  
 2026 PAVEMENT PROGRAM  
 Title  
 FRANKLIN'S GULL AND INDUSTRIAL - PAVING

City of Parksville Project No. 5400-10-PAV	Scale Horizontal: 1:500 Vertical:
City of Parksville Drawing No.	Consultant's Drawing No. 5400-10-2602
Sheet No. 02 OF 04	Revision A

LEGEND	
	STORM MANHOLE
	STORM CATCH BASIN
	SANITARY MANHOLE
	WATER VALVE
	SURVEY MONUMENT
	NEW PAVEMENT EXTENTS
	MILLING EXTENTS

**MAPLE CRESCENT - NOTES**

MEASUREMENTS ARE APPROXIMATE AND MUST BE CONFIRMED BY TENDERER.

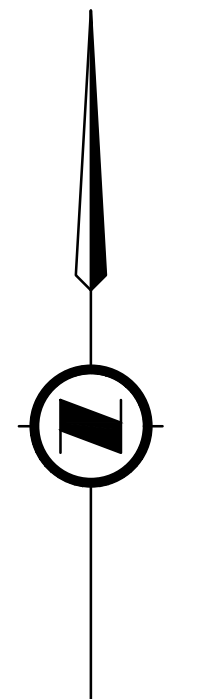
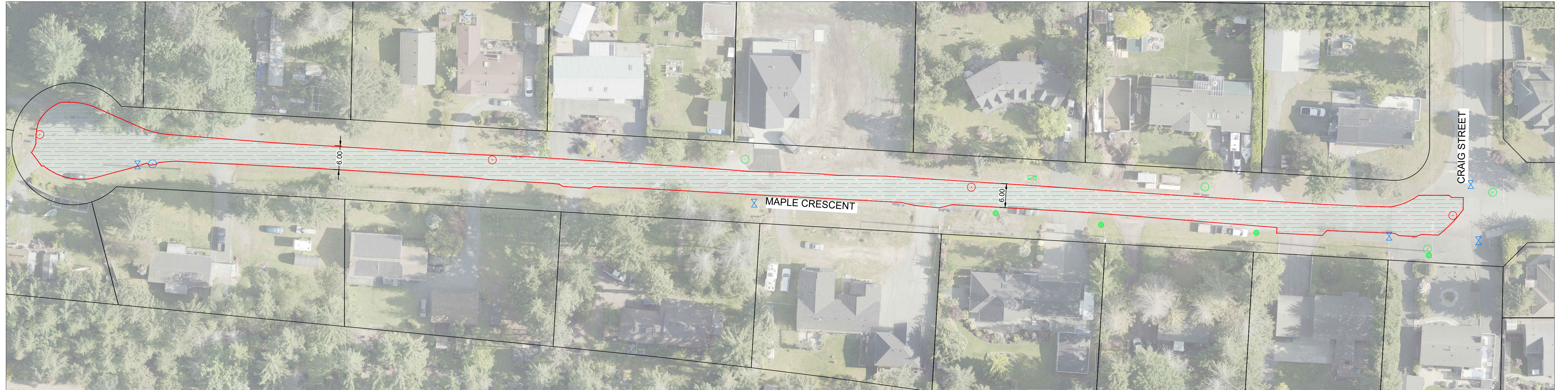
**MILLING**  
 FULL DEPTH MILLING REQUIRED.  
 60mm ANTICIPATED THICKNESS.  
 IF AREAS OF THICKER OR THINNER ASPHALT ARE ENCOUNTERED, CONFIRM REQUIRED MILLING DEPTH WITH CONTRACT ADMINISTRATOR.  
 MILLING AREA IDENTIFIED = 2,490 m<sup>2</sup>.

**ANCILLARY PATCHING**  
 PERFORM ANCILLARY PATCHING AS DIRECTED BY CONTRACT ADMINISTRATOR.  
 REMOVAL AND REINSTATEMENT OF BASE OR SUBBASE MAY BE REQUIRED.

**BASE SHAPING**  
 RESHAPE GRANULAR ROADBEDS PRIOR TO PAVING WITH A MINIMUM 2% CROWN FITTED TO ADJACENT TOPOGRAPHY.  
 AREA = 2,490 m<sup>2</sup>  
 ESTIMATED COMPACTED VOLUME OF IMPORTED MATERIAL = 61.75m<sup>3</sup>  
 WEIGHT = 2.2 T/m<sup>3</sup>  
 TOTAL WEIGHT ± 137 TONNES

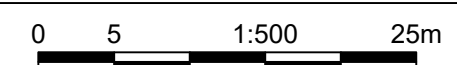
**50mm ASPHALT PAVING**  
 LENGTH = 350 m  
 AREA = 2,490 m<sup>2</sup>  
 WEIGHT ± 311 TONNES  
 3 ASPHALT CORES REQUIRED

**SHOULDERS**  
 ADDITIONAL SHOULDER MATERIAL NOT ANTICIPATED TO BE REQUIRED DUE TO FULL DEPTH MILLING. CONTRACTOR TO REGRADE EXISTING SHOULDERS AS NECESSARY TO MEET NEW ASPHALT.



**NOTE:**

- FOR DISCUSSION ONLY - NOT FOR CONSTRUCTION
- ORTHOGRAPHIC IMAGERY & LEGAL CADASTRE LOCATIONS ARE APPROXIMATE ONLY
- THIS DRAWING IS SCHEMATIC ONLY AND IS PROVIDED ONLY FOR THE CONVENIENCE OF THE USER. THIS IS NOT AN OFFICIAL CITY OF PARKSVILLE PLAN OR WORK ORDER.
- ALL USERS MUST SATISFY THEMSELVES AS TO THE REQUIRED EXTENTS OF ANY WORKS BEFORE UNDERTAKING THEM.



Prepared by:	RJD	20260604	Date
Design by:	RJD	20260604	Date
Drawn by:	AD	20260604	Date
Checked by:	AD	20260604	Date
Approved by:			Date
			Seal

No.	Date	Revisions	By
A	20260604	ISSUED FOR TENDER	RJD

Developer

Location

PARKSVILLE



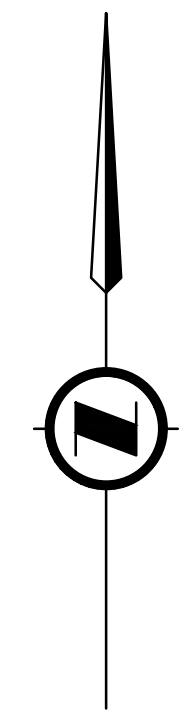
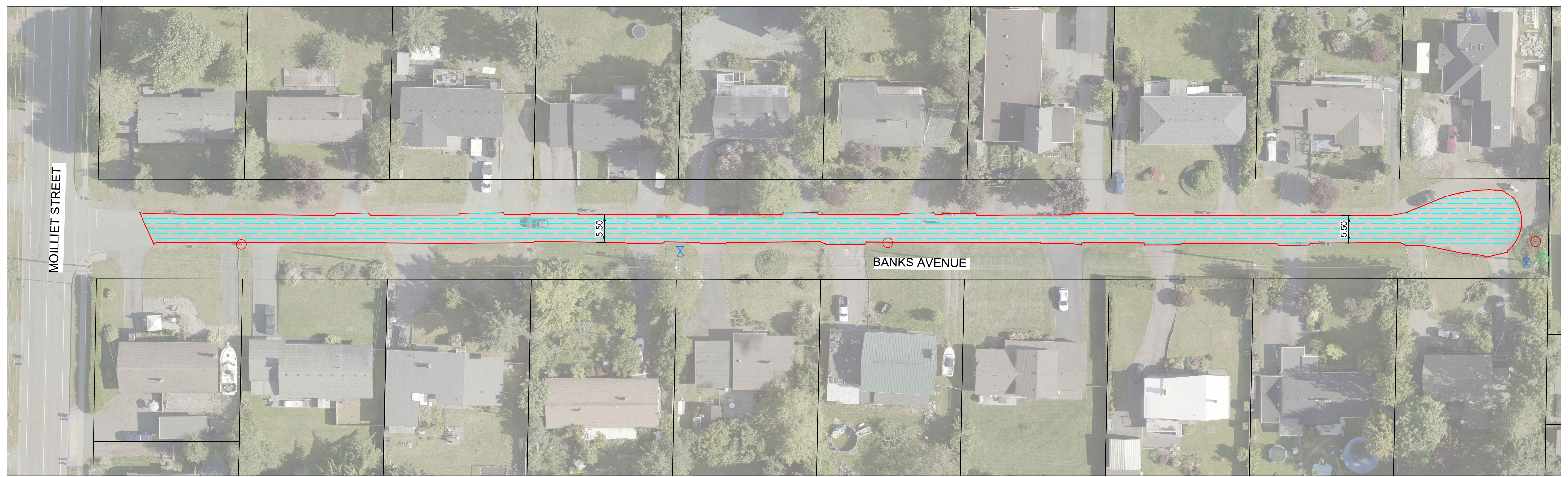
Project

2026 PAVEMENT PROGRAM

Title

MAPLE CRESCENT - PAVING

City of Parksville Project No.	5400-10-PAV	Scale	1:500
City of Parksville Drawing No.		Horizontal	1:500
Vertical		Vertical	
Consultant's Drawing No.	5400-10-2603	Sheet No.	03 OF 04
Revision	A		



LEGEND	
	STORM MANHOLE
	STORM CATCH BASIN
	SANITARY MANHOLE
	WATER VALVE
	SURVEY MONUMENT
	NEW PAVEMENT EXTENTS
	MILLING EXTENTS

**BANKS AVENUE - NOTES**

MEASUREMENTS ARE APPROXIMATE AND MUST BE CONFIRMED BY TENDERER.

**MILLING**  
 FULL DEPTH MILLING REQUIRED.  
 60mm ANTICIPATED THICKNESS.  
 IF AREAS OF THICKER OR THINNER ASPHALT ARE ENCOUNTERED, CONFIRM REQUIRED MILLING DEPTH WITH CONTRACT ADMINISTRATOR.  
 MILLING AREA IDENTIFIED = 1,700 m<sup>2</sup>.

**ANCILLARY PATCHING**  
 PERFORM ANCILLARY PATCHING AS DIRECTED BY CONTRACT ADMINISTRATOR.  
 REMOVAL AND REINSTATEMENT OF BASE OR SUBBASE MAY BE REQUIRED.

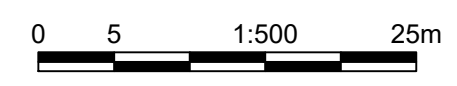
**BASE SHAPING**  
 RESHAPE GRANULAR ROADBEDS PRIOR TO PAVING WITH A MINIMUM 2% CROSS SLOPE TO THE NORTH FITTED TO ADJACENT TOPOGRAPHY.  
 AREA = 1,700 m<sup>2</sup>  
 ESTIMATED COMPACTED VOLUME OF IMPORTED MATERIAL = 42.5m<sup>3</sup>  
 WEIGHT = 2.2 T/m<sup>3</sup>  
 TOTAL WEIGHT ± 94 TONNES

**50mm ASPHALT PAVING**  
 LENGTH = 275 m  
 AREA = 1,700 m<sup>2</sup>  
 WEIGHT ± 213 TONNES  
 3 ASPHALT CORES REQUIRED

**SHOULDERS**  
 ADDITIONAL SHOULDER MATERIAL NOT ANTICIPATED TO BE REQUIRED DUE TO FULL DEPTH MILLING. CONTRACTOR TO REGRADE EXISTING SHOULDERS AS NECESSARY TO MEET NEW ASPHALT.

**NOTE:**

- ORTHOGONOGRAPHIC IMAGERY & LEGAL CADASTRE LOCATIONS ARE APPROXIMATE ONLY
- THIS DRAWING IS SCHEMATIC ONLY AND IS PROVIDED ONLY FOR THE CONVENIENCE OF THE USER.
- ALL USERS MUST SATISFY THEMSELVES AS TO THE REQUIRED EXTENTS OF ANY WORKS BEFORE UNDERTAKING THEM.



Prepared by:  
 City of Parksville  
 Engineering Department  
 P O Box 1390,  
 100 Jensen Avenue East,  
 Parksville, BC V9P 2H3  
 Office: 250 951 2484  
 Fax: 250 954 4657

RJD	20260604	Design by	Date
RJD	20260604	Drawn by	Date
AD	20260604	Checked by	Date
AD	20260604	Approved by	Date

No.	Date	Revisions	By
A	20260604	ISSUED FOR TENDER	RJD

Developer  
 \_\_\_\_\_  
 Location  
 PARKSVILLE



Project  
 2026 PAVEMENT PROGRAM  
 Title  
 BANKS AVENUE - PAVING

City of Parksville Project No. 5400-10-PAV	Scale 1:500 Vert.
City of Parksville Drawing No.	Consultant's Drawing No. 5400-10-2604
Sheet No. 04 OF 04	Revision A