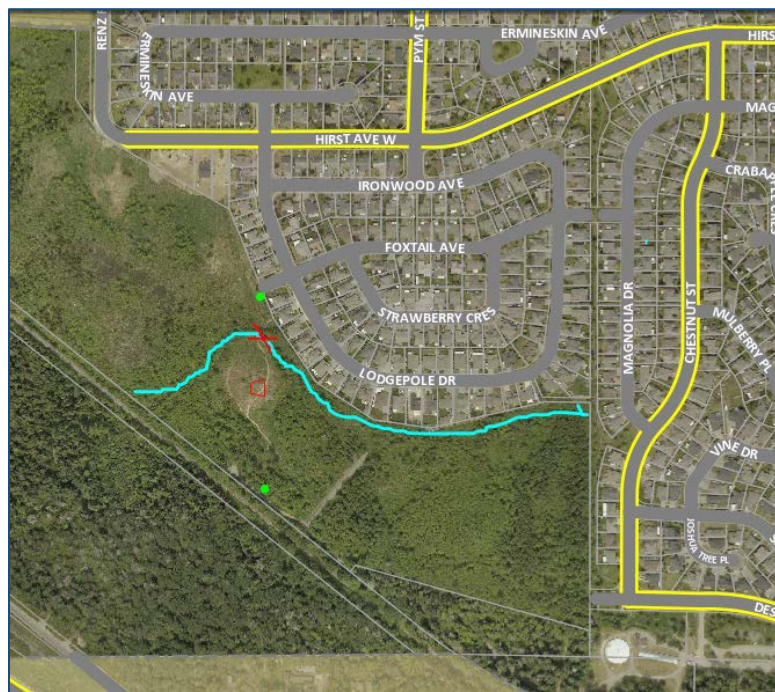



Portions of Parksville Wetlands Opened to Public

Earlier this year, the City closed access to sections of the Parksville Wetlands (Ermineskin parkland) on recommendation of the Municipal Insurance Association of British Columbia. Since February, operations staff have addressed many items which could be considered a risk to the public and portions of the park are now open.

In order to expedite the reopening of the wetlands, staff fenced off an area of concrete and metal debris on the knoll in the centre of the park until such time as access with machinery is possible. The makeshift crossing of the watercourse has also been removed. Unfortunately, access from the end of Foxtail Avenue to the wells road and towards Despard Avenue or Coldwater Road remains closed to the public. Signage has been placed at the end of Foxtail and at the start of the trail to the knoll in the centre of the park which advises crossing at the watercourse is not possible.

The City sees this as the first step in preserving the Parksville Wetlands as a natural area for citizens to enjoy.





NOTICE

RECREATIONAL NATURE PARK

USE CAUTION

WATCH FOR

- LOOSE ROCKS AND EARTH
- FALLEN TREES
- TREE ROOTS
- WET AREAS
- OTHER NATURAL OBSTACLES

DIFFICULT TERRAIN MAY BE UNSUITABLE FOR SOME PEOPLE

BRIDGE OUT: NO ACCESS TO FOXTAIL ROAD FROM THIS POINT

FOR INFORMATION CALL CITY OF PARKSVILLE 250-248-5412

For more information:

Operations Department
Deb Tardiff, Manager of Communications

250 248-5412
250 954-3073