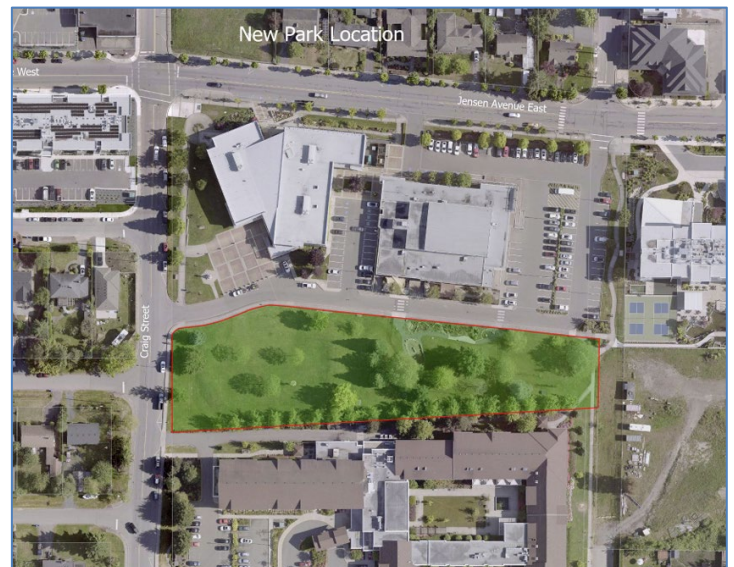


New Parkland for Parksville

At the April 20 meeting, Council passed a bylaw formally dedicating a 1.8-acre (.73-hectare) parcel of land to the south of 100 Jensen Avenue as a park. This greenspace between the Parksville Civic and Technology Centre and Jensen Centre and Stanford Place has been enjoyed as a park for many years despite not having a formal designation.

This decision from Council confirms the area as a park and any future changes in use would require approval of the electors. Residents will not see any changes on the ground and there are no plans to increase or change service levels associated with the space, meaning there are no tax implications arising from the designation.

The motion was brought forward by Councillor Gaur and approved by Council in 2025, with the intent of formalizing the designation before the end of this Council's term. Adoption of the bylaw fulfills the commitment of Council.



###

For more information:

Deb Tardiff, Manager of Communications
communications@parksville.ca; 250 954-3073

*The City of Parksville is located on the traditional territory of the Coast Salish Nations,
home to the Snaw-Naw-As First Nation and the Qualicum First Nation.*